



Advancing
patient care *and*
digestive health

2017 ANNUAL REPORT

Contents

LETTER FROM THE ASGE FOUNDATION CHAIR 4

CORPORATE PARTNERS PROGRAM..... 5

EDUCATION 7

PRACTICE IMPROVEMENT 13

RESEARCH..... 15

PUBLIC OUTREACH..... 18

CRYSTAL AWARDS 21

BEYOND OUR WALLS CAMPAIGN 24

GENEROUS DONORS..... 27

FINANCIAL STATEMENTS..... 31

FOUNDATION BOARD OF TRUSTEES 32

2017

Letter from the ASGE Foundation Chair

On behalf of ASGE, I want to extend my heartfelt gratitude to every member, corporate partner, grateful patient and friend of the ASGE who so generously supported the ASGE Foundation in 2017.



Dear Donors to the ASGE Foundation: Thank you!

On behalf of ASGE, I want to extend my heartfelt gratitude to every member, corporate partner, grateful patient and friend of the ASGE who so generously supported the ASGE Foundation in 2017.

This annual report offers a look at all that you have helped ASGE achieve in 2017. Thanks to your support, our members have made remarkable progress and achievements in education, practice improvement, research and public outreach that help make ASGE members better endoscopists and improve gastrointestinal care for countless patients.

As we build on past successes, this annual report also illustrates how much the society has grown with your help to meet the needs of our members. With funding from the Beyond Our Walls campaign, we are excited to launch

GI Leap, ASGE's newest technology platform for GI Learning, Exploring, and Advancing Practice. GI Leap offers the modern learner an optimal online learning experience through better performance, educational content, functionality, simplicity, and control. Together, we have taken a big step forward in our journey Beyond Our Walls, and there is much more to come. GI Leap is the future of learning at ASGE, and you made it possible!

The future of GI endoscopy is bright. Your contributions make these achievements possible. Thank you for your continued support of the ASGE Foundation.



A handwritten signature in black ink that reads "John L. Petrini, MD". The signature is fluid and cursive.

ASGE Foundation Chair
John L. Petrini, MD, FASGE



Mission Statement

The ASGE Foundation is the philanthropic arm of the American Society for Gastrointestinal Endoscopy (ASGE) and supports the Society's mission to advance patient care and digestive health by promoting excellence and innovation in gastrointestinal endoscopy.

2017

Corporate Partners Program

Support from corporate partners grows the ASGE Foundation– funding education, practice improvement, research and public outreach initiatives – and fosters the science and practice of gastroenterology.



2017 Corporate Partners Program

Platinum Level Supporters



Gold Level Supporters



Silver Level Supporters



Thanks to our 2017 Corporate Partners for their generous investment in ASGE's mission to advance patient care and digestive health by promoting excellence and innovation in endoscopy.



2017

Education

ASGE delivers cutting-edge training through specialized instruction and hands-on opportunities.

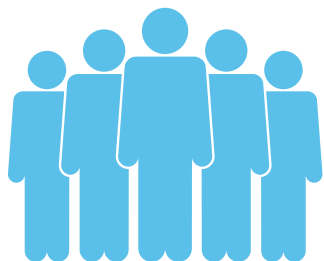


Hands-On Training and Clinical Education

From trainees to advanced practitioners, ASGE delivers clinical education in a variety of formats, including multimedia (videos, articles, social media feeds) and both online and live courses featuring hands-on training, many at our state-of-the-art Institute for Training and Technology (IT&T).

The IT&T uses some of the best teaching methods available to endoscopists, including animate hands-on labs, live transmission of real cases from leading medical centers, use of high-tech equipment and real-time assessments. ASGE offers courses on different topics to help endoscopists acquire and maintain the skills and knowledge necessary to advance clinical knowledge, improve practice, and meet both CME and MOC requirements.

3,479 participants



► “Having the opportunity to meet fellow trainers from the US, the UK, Canada, and India and to share each other’s experiences in these topics was invaluable.”

► “The small group sessions dealing with the cognitive aspects of training and giving performance-enhancing feedback are immediately implementable; and working through the hands-on sessions gave us a chance to practice techniques we discussed.”

LEAD Program

ASGE created the Leadership Education and Development (LEAD) program to develop and mentor female junior gastroenterologists from all ethnic and social backgrounds by enhancing and energizing their leadership and career development skills through education, coaching and building professional networks.

In 2017, ASGE hosted the 4th LEAD Program class of 20 female gastroenterologists from around the country. The LEAD program

focused on leadership lessons, public speaking, negotiation strategies and work/life integration to help participants develop skills and techniques to enhance leadership opportunities within their organizations and ASGE.

The 2017 LEAD program was supported by the ASGE Foundation and a grant from Pentax Medical.



Ambassador Program

The ASGE Ambassador Program took place in September 2017 in Iasi, Romania at the Regional Institute of Oncology in Iasi, Romania and focused on basic and more advanced polypectomy techniques (EMR and ESD) to highlight the importance of colon cancer screening. The program provided didactic and hands-on training to 30 physicians from Romania, and 30 patients were treated.



Nalini Guda, MD, FASGE



Klaus E. Monkemuller,
MD, PhD, FASGE



Paul Yeaton, MD



Cynthia Yoshida, MD

► “This has probably been the most important lecture series in my career for development as a female physician. I think this will change my view of my role in medicine, and inspire me to my potential.” – *Brooke Glessing, MD*

► “The ASGE Ambassador Program brought together advanced endoscopists throughout Romania and helped to foster more collaboration between their groups. I remain immensely grateful to the ASGE for sponsoring this program which has fostered relationships and improved endoscopy around the world.” – *Cynthia Yoshida, MD*

Cook Medical Don Wilson Awards

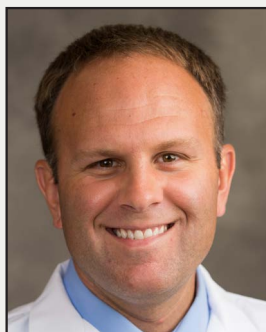
The Don Wilson Award provided advanced fellows or junior faculty with the opportunity to train outside of their home country with a premier GI endoscopist or group to advance training. The awards were underwritten by a grant from Cook Medical.



Hazem T. Hammad, MD



Madalina Ilie, MD



Ryan Law, DO

Cook Medical Marsha Dreyer Awards

The Cook Medical Marsha Dreyer Award provided scholarships for international trainee member physicians to attend DDW®. The awards were underwritten by a grant from Cook Medical.



Ali Alali, MD



Santi Kulpatcharapong, MD

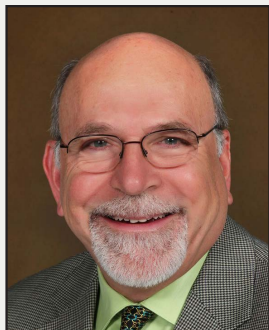
- “This award allowed me to visit some of the most prestigious centers for advanced endoscopic resection in the world such as the National Cancer Center and Keio University in Tokyo, Japan. During my visit, I was exposed to a large number of cases, interacted with distinguished endoscopists on a daily basis and participated in hands-on training sessions.”
–Hazem Hammad, MD
- “This training will be instrumental in further developing the interventional endoscopy capabilities at the University of Michigan. I am appreciative of the continued support offered by the ASGE in the infancy of my career and hope that I can live up to the expectations set forth by our great society.”
–Ryan Law, DO

- “As a young therapeutic endoscopist, I believe acknowledging the importance of research in our field is crucial. This award will encourage me to pursue a career in academic medicine to advance the field of therapeutic endoscopy and patient care.” – Ali Alali, MD
- “This award is such a special honor with tremendous inspiration for me to keep pursuing my career goal in GI endoscopy and research.”
–Santi Kulpatcharapong, MD

Lectureships

Basil I. Hirschowitz, MD
Endowed Lecture

Evolution of Endoscopic Bariatric Therapy



Steven A. Edmundowicz, MD, FASGE

The lectureship, in memory of Dr. Hirschowitz, was established by the ASGE Foundation through the generous support of ASGE, friends, trainees, and colleagues of Dr. Hirschowitz.

J. Edward Berk, MD, DSc, FASGE
Endowed Lecture

Learn to look! How easily overlooked lesions lead to colon cancer



Roy M. Soetikno, MD, MS, FASGE

The lectureship, in memory of Dr. Berk, was established by the ASGE Foundation through the generous support of the Berk family.

Jack A. Vennes, MD and Stephen E. Silvis, MD
Endowed Lecture

Endoscopy in the management of pancreatic necrosis: standard of care?



John Baillie, MBChB, FASGE



Martin L. Freeman, MD, FASGE

The lectureship, in memory of Drs. Vennes and Silvis, was established by ASGE and the ASGE Foundation through the generous support of Cook Medical and supported with contributions from the Olympus Corporation of the Americas, colleagues, friends and trainees of Drs. Vennes and Silvis.

- “I am humbled to be selected as the 2017 Basil I. Hirschowitz, MD Endowed Lecture recipient. This lecture honors the physician responsible for the development of the clinical practice of endoscopy. Dr. Hirschowitz was a true leader and innovator in our field.” – *Steven A. Edmundowicz, MD, FASGE*

- “Jack and Steve were not only true pioneers of ERCP and other endoscopic techniques, but were kind, considerate, incredibly patient, and willing to share their visionary expertise with fellows and faculty, and practitioners alike. They served as role models and mentors, not only professionally but personally as well, and I am so grateful to have had the privilege to work with and be inspired by them.” – *Martin L. Freeman, MD, FASGE*

Lectureships

Gene and Lyn Overholt Endowment and Lectureship

ASGE proudly announces the Gene and Lyn Overholt Endowment in recognition of Dr. Gene Overholt's monumental contributions to GI endoscopy, and in celebration of Dr. and Mrs. Overholt's 80th birthdays in 2017.

A past president of ASGE and recipient of the Rudolf V. Schindler Award, Dr. Overholt's many accomplishments include the development of the flexible sigmoidoscope in the early 1960s, an innovation that paved the way for flexible colonoscopy. Dr. Overholt was also instrumental in moving GI endoscopy from the hospital environment to the ASC setting, thereby creating a new paradigm for the provision of cost-efficient GI care and cancer screening services. With his groundbreaking research into photodynamic therapy and laser-induced fluorescence, Dr. Overholt helped lay the foundation for today's endoscopic therapies for Barrett's esophagus and esophageal cancer. More details about Dr. Overholt's amazing career can be found [here](#).

The Gene and Lyn Overholt Endowment will support ASGE programs and activities focused on clinical innovation and practice improvement, including an annual lecture to be presented during DDW® beginning in 2018.

View a list of [donors](#) to the Gene and Lyn Overholt Endowment.



Dr. and Mrs. Gene Overholt

- "The Gene and Lyn Overholt Endowment honors a true innovator in gastrointestinal endoscopy. This fund allows all of us to recognize Gene's work, not only in developing the lower GI endoscope, but also his work on improving the practice of gastrointestinal endoscopy. The Gene and Lyn Overholt Endowment will be used to highlight developments in the field of endoscopy and clinical practice and the ASGE has been blessed to have been at his side during his illustrious career." – John L. Petrini, MD, FASGE, Chair, ASGE Foundation

2017

Practice Improvement

ASGE offers resources to simplify the complexities of today's healthcare environment and position your practice for the future.



Practice Improvement Resources

ASGE has developed a series of educational resources to help the business side of your GI practice thrive in this changing health care delivery system by enhancing efficiency, performance, profitability, and more.

- The ASGE released the GI Operations Benchmarking Survey funded by the ASGE Foundation Beyond Our Walls Campaign. Features of this new system allow personalized reports that can benchmark individual practice operations against multiple metrics and other GI units. Data from the survey was used to develop an Executive Summary and Databook on 2016 GI Practice Operations Key Survey Demographics.

Key Demographics



756 Gastroenterologists



83 Units



586,275 Procedures



564,093 Patients

- 98-member practices registered for the quarterly GI Coding webinar series on topics including: Top Issues Affecting GI Practices for the First Quarter of 2017, Advanced Endoscopy Procedures, Bariatrics, Nutrition, Diagnostic Studies and Radiology.
- 10 Practice Management Courses took place in 2017 and were aimed at empowering physicians and non-physician staff to create and run efficient, high-quality and profitable GI units.
- ASGE introduced a new monthly e-newsletter designed to provide key updates on ASGE practice resources that impact your entire GI Team, as they relate to policy, practice management, quality, coding and reimbursement, and patient education.



- “We have cut costs substantially by reducing volume and staffing which reduced our FTE needs by 1.5. We also received a Centers for Medicare and Medicaid Services exemption for Certified Electronic Health Record Technology.” – *Narayanachar S. Murali, MD*

2017

Research

ASGE Foundation-funded research leads to the development of new techniques, devices and applications that make endoscopy safer, more comfortable and more effective for diagnosing and treating digestive disease.



Endoscopic Research Awards

Endoscopic Research Awards are funded entirely by the ASGE Foundation. In addition to annual support from generous donors, the grants are funded in part by the Michael V. Sivak Endoscopic Research Endowment, AstraZeneca Research Endowment, Olympus

Endowment Fund and Takeda Research Endowment. These awards are offered to physicians for projects in basic, translational and clinical endoscopic research.

Evaluation and Validation of the Biomarker mAb Das-1 in Precancerous Pancreatic Cystic Lesions



Koushik K. Das, MD

Randomized Controlled Trial (RCT) of Standard Endoscopic Hemostasis Compared to OVESCO for Severe Non-variceal UGI Hemorrhage



Dennis M. Jensen, MD

Training for COMPLETE Polyp Resection During Colonoscopy – Improving Competency and Metrics for Polypectomy Skills Using Evaluation Tools and Video Feedback



Tonya R. Kaltenbach, MD, MS, FASGE

A Non-invasive Endoscopic Follow-up of the Entire Gastrointestinal Tract in Pediatric Crohn's Disease: The Advent of Pan-enteric Capsule Endoscopy



Salvatore Oliva, MD

The Appropriate Use of Endoscopy in Pancreatic Cancer Patients



Anna Tavakkoli, MD

- “As a translational researcher and therapeutic endoscopist, I am working to examine the utility of biomarkers for malignant transformation and early detection in pancreatic cancer. The generous support from the ASGE will allow me to develop my research program as I start my independent career to translate novel molecular tools to identify at-risk lesions and improve patient outcomes.” – *Koushik K. Das, MD*

- “Receiving the ASGE Endoscopic Research Award provides the support to study the utilization of ERCP, geographic variations of care, and costs associated with failed ERCP among patients with pancreatic cancer. Our study could potentially lead to finding differences in access to advanced endoscopic procedures and lead to improvements in patient care. I am honored and grateful for the ASGE's support.” – *Anna Tavakkoli, MD*

ASGE Diversity Awards

The Diversity Awards are granted to physicians who submitted outstanding abstracts for DDW®, promoting gender- and ethnicity-related healthcare research.

Ethnicity Research Award

Predictors of Acute Pancreatitis in Patients with Severe Hypertriglyceridemia in Ethnic Minority Populations



Divyanshu Mohananey, MD

Gender Research Award

Risk Factors for the Development of Sessile Serrated Adenomas in a Predominantly African-American, Female, Obese Inner-City Population



Stanley J. Pietrak, MD

- “We care for patients who are often ethnic minorities, uninsured or belong to a socio-economic stratum that precludes them from obtaining care anywhere else. While taking care of these patients is a privilege, with this also comes the responsibility of studying this unique population in an effort to identify risk factors for diseases and guide management (both preventative and curative). We aimed to do this in hypertriglyceridemic patients with pancreatitis and we hope that our observations will help risk stratify patients, guide further research and eventually improve patient care for minority populations. – *Divyanshu Mohananey, MD*
- “As a physician, my goal has always been to provide the best medical care possible for my patients. One of the many ways in which I have tried to accomplish this is by investigating the potential role that various patient- and physician-related factors play in the delivery of care to patient populations. From this research, I have begun to uncover trends that challenge the traditional thinking when it comes to adenoma formation between different genders and ethnicities. Although I have just begun my career in gastroenterology, I hope to continue to have a positive impact in the field through continued research on quality measures and their application to diverse patient populations.” – *Stanley J. Pietrak, MD*

2017

Public Outreach

ASGE educates your patients and the public about the important role of endoscopy in treating and preventing GI diseases.



National Colorectal Cancer Awareness Month (NCRCAM)

- New public service ads distributed on popular television networks during March, including CNN, Fox, Lifetime, ABC Family, Bloomberg, Oprah Winfrey Network, Hallmark Channel and more. Estimated audience: 2.75 million.
- A multimedia news release featuring the PSA and other shareable content was picked up by 245 media outlets, including 94 newspapers and 97 broadcast media channels. In addition, campaign messaging was displayed in Times Square.
- A radio news release featuring ASGE President Ken McQuaid (2016-2017) was aired as part of Radio Health Journal (453 stations) and Viewpoints (545 stations). These spots were heard in 24 of the top 25 markets, and 48 of the top 50 markets.
- ASGE ran a successful hashtag campaign, “#ColonoscopyIsEasier” in social media, earning attention from a variety of followers and reaching patients as well as our internal audience, with 69,000 Likes, Shares and comments.



Community Outreach Awards

The Community Outreach Award for Trainees is aimed at recognizing Trainees for doing good works in their community related to raising awareness about digestive health issues.

The 2017 award was for raising awareness about colon cancer screening and prevention through the creation of a video. The winning videos were featured on ASGE.org, Screen4coloncancer.org, and ASGE social media channels.

"Go for the Gold"



Amit Sachdev, MD

"Big 50"



Shelini Sooklal, MD



- "Colorectal cancer is a leading cause of cancer deaths in the U.S. and as a society we have to change this. With my mentors at Columbia University and the help of ASGE and members of the National Colorectal Cancer Roundtable, my hope is to launch one of the largest fights in recent history to fight and beat colorectal cancer." – *Amit Sachdev, MD*

- "Being a Community Outreach Award recipient allows me the opportunity to use my video to promote colorectal cancer awareness, and educate patients both in my institution and nationally." – *Shelini Sooklal, MD*

2017

Crystal Awards



Crystal Awards

ASGE honored several outstanding gastroenterologists who have contributed to the advancement of GI endoscopy during the Crystal Awards gala on May 7, at the Radisson Blu Aqua Hotel in Chicago.



Rudolf V. Schindler Award



Robert A. Ganz, MD, FASGE

Master Endoscopist Award



Louis M. Wong Kee Song, MD, FASGE

Distinguished Service Award



Irving M. Pike MD, FASGE

Distinguished Educator Award

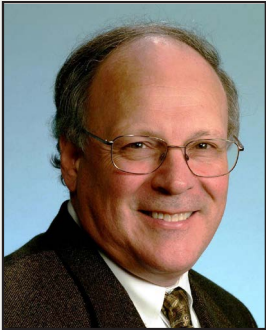


Brenda J. Hoffman, MD, FASGE

- “It has been an honor and privilege to work in the field of gastroenterology and also on behalf of the ASGE, and my life is immeasurably fuller for the opportunity. I hope via my service that I have been able to make some small contribution to the field of gastroenterology, but I really think I got the better end of the bargain. It really has been more fun than work. It has been a complete joy to practice, create innovative devices and research, and serve in various societal capacities, and I will remain grateful for all the energies and contributions made by all my colleagues.” – *Robert A. Ganz, MD, FASGE*

Crystal Awards

Distinguished Endoscopic Research Mentoring Award



Douglas A. Howell, MD, FASGE

International Service Award



Hisao Tajiri, MD

President's Award



Samuel A. Haroz II, CPA

Congressional Service Award



US Representative Leonard Lance
(R-NJ-7)

- “I am truly humbled to receive the Master Endoscopist Award and an even greater honor to be placed in such distinguished ranks as those of the past honorees. I am passionate about the practice of endoscopy and to be acknowledged with this award is simply icing on the cake. I am grateful to my friends and colleagues at Mayo for allowing me the opportunity to fulfill my passion and to serve the best interests of our patients. My sincere appreciation and thanks to the ASGE for recognizing me with the Master Endoscopist Award.”
– Louis M. Wong Kee Song, MD, FASGE



2017

Beyond Our Walls Campaign

Thanks to our generous
supporters, ASGE has taken a
giant leap Beyond Our Walls!



BEYOND OUR WALLS

The Future of Endoscopic
Education and Practice

Beyond Our Walls Campaign

Funds raised through the ASGE Foundation Beyond Our Walls campaign help to bring visionary and innovative clinical education and practice improvement resources for our members, anywhere in the world!

We are pleased to introduce GI Leap, ASGE's newest technology platform for GI Learning, Exploring, and Advancing Practice. With funding from the Beyond Our Walls campaign, GI Leap offers the modern learner an optimal online learning experience through better performance, educational content, functionality, simplicity, and control.

[Click here](#) to experience GI Leap, or click on “**learn**” in the navigation bar at the top of ASGE's webpage.



Beyond Our Walls supporters have also helped to support:

- GI Operations Benchmarking Survey
- ASGE's complete line of physician practice management products
- Clinical education, practice improvement and international webinars
- Simulcasting at IT&T courses
- A new monthly series on GI Leap for Fellows
- New multi-week online course for GI Leap

...And so much more to come!



Victoria Gomez, MD



Andrew Y. Wang, MD, FASGE

- “The ASGE has helped grow my career immensely as an academic gastroenterologist. Through its support with courses, hands-on training, lectures and mentorship through several of the committees, I have been able to grow as a member of the gastroenterology community. I am grateful for all the Society offers and want to continue to support its cause.” – *Victoria Gomez, MD*

- “By supporting the ASGE's Beyond Our Walls Campaign, I know that I am funding initiatives that will foster endoscopic innovation and education for clinicians worldwide. Importantly, this campaign's focus on “distance learning” in the area of endoscopic best practices will translate into better care for our patients. Please join me in supporting the ASGE in this important endeavor!” – *Andrew Y. Wang, MD, FASGE*

Launch Partner – \$1,000,000

**Boston
Scientific**
Advancing science for life™

Emerald Supporter – \$250,000

FUJIFILM
Value from Innovation

Ironwood

Ruby Supporter – \$100,000

COOK®
MEDICAL

erbe
power your performance.

pe
physiciansendoscopy
THE ASC DEVELOPMENT AND MANAGEMENT COMPANY

Sapphire Supporter – \$50,000

PENTAX
MEDICAL

us endoscopy
listening...and delivering solutions™

Amethyst Supporter – \$25,000

hygieacare®

Jade Supporter – Up to \$24,999

MERTMEDICAL
ENDOTEK™

OLYMPUS®
Your Vision, Our Future

Diamond – \$50,000 or more

Annemarie & Steven Edmundowicz, MD, FASGE

Mary & John J. Vargo II, MD, MPH, FASGE

Emerald – \$25,000-\$49,999

Ravi S. Chittajallu, MD
Gerard Isenberg, MD, MBA, FASGE
Rosemary & Kenneth McQuaid, MD, FASGE

Mick S. Meiselman, MD, FASGE
Karen C. & Bret T. Petersen, MD, FASGE
Maryella & John Petrini, MD, FASGE

Leslie & Douglas Rex, MD, FASGE
Clint & Colleen Schmitt, MD, MHS, FASGE
Timothy J. Wilmott

Karen L. Woods MD, FASGE &
Michael S. Osato, PhD

Ruby – \$15,000-\$24,999

Drs. John & Alison Baillie
Subhas Banerjee, MD, FASGE
Deborah & Tom Deas Jr., MD, MMM, FASGE

Angela B. & John A. Martin, MD, FASGE
Klaus Mergener, MD, PhD, MBA, FASGE
& Sabine Endrigkeit, MD

V. Raman Muthusamy, MD, FASGE
Carey B. Strom, MD, FASGE
Lisa B. & William M. Tierney, MD, FASGE

Michael B. Wallace, MD, MPH, FASGE
Phaedra & Patrick Yachimski, MD, MPH, FASGE

Sapphire – \$10,000-\$14,999

Firas H. Al-Kawas, MD, FASGE
Michelle A. Anderson, MD, MSc, FASGE
Brian C. Brauer, MD, FASGE
Timothy J. Cornnell, MD, FASGE
Mia & David L. Diehl, MD, FASGE
John Dumot, DO, FASGE

Douglas O. Faigel, MD, FASGE
Ashley L. Faulx, MD, FASGE
Mo & M. Brian Fennerty, MD, FASGE
Patrick D. Gerstenberger, MD, FASGE
Ferga C. Gleeson, MD, FASGE
David A. Greenwald, MD, FASGE

Chris & Rob Hawes, MD, FASGE
Gordon C. Hunt, MD, FASGE
Lalith H. Jamil, MD, FASGE
Jason B. Klapman, MD, FASGE
Ryan Law, DO
Michael J. Levy, MD

Faris M. Murad, MD, FASGE
Sarah 'Betsy' Rodriguez, MD, FASGE
Dr. & Mrs. Bennett E. Roth, FASGE
Niki R. & Raj J. Shah, MD, FASGE
Vanessa M. Shami, MD, FASGE
Prateek Sharma, MD, FASGE

Scott M. Tenner, MD, MPH, FASGE
Mihir S. Wagh, MD, FASGE & Sujata Wagh, MD
Natalie, Jacob, Esther &
Andrew Y. Wang, MD, FASGE

Amethyst – \$7,500-\$9,999

Anonymous
Neena S. Abraham, MD, FASGE
Mohammad Al-Haddad, MD, FASGE
Harry R. Aslanian, MD, FASGE
Dale Bachwich, MD
Beatrice A. and Todd H. Baron, MD, FASGE
Tamir Ben-Menachem, MD, MSc
Edward S. Bentley, MD, FASGE
The Berk Society
Brett Bernstein, MD, FASGE
Brian P. Bosworth, MD, FASGE

Sarah & David Carr-Locke, MD, FASGE
Maurice A. Cerulli, MD, FASGE
Jonathan Cohen, MD, FASGE
Vinay Dhir, MD, FASGE
Jason Dominitz, MD, MHS, FASGE &
Josephine Young, MD, MPH, MBA
Kulwinder S. Dua, MD, FASGE
Glenn M. Eisen, MD, MPH, FASGE
Grace H. Elta, MD, FASGE
Laurel R. Fisher, MD, FASGE
Lawrence S. Friedman, MD, FASGE
Andres Gelrud, MD, MMSc, FASGE

Victoria Gomez, MD
Deepak V. Gopal, MD, FASGE
Frank G. Gress, MD, FASGE
Nalini Guda, MD, FASGE
Douglas A. Howell, MD, FASGE
Shakir Hyder, MD
Vidya & Prasad G. Iyer, MD, MS, FASGE
F. Wilson Jackson, MD, FASGE
Brian C. Jacobson, MD, MPH, FASGE &
Beverly Moy, MD, MPH
Charles J. Kahi, MD, FASGE
Tonya R. Kaltenbach, MD, MS, FASGE

Esther & Franklin Kasmin, MD, FASGE
Ashvini & Rajesh Keswani, MD
Truptesh & Shivangi Kothari, MD, FASGE
Richard A. Kozarek, MD, FASGE
Simon K. Lo, MD, FASGE
Dawn & Arnold Markowitz, MD, FASGE
Girish Mishra, MD, MSc, FASGE
Bhupinder & Daniel Mullady, MD, FASGE
Mohamed Othman, MD
Mohammed Abdul Qadeer, MD
Jason N. Rogart, MD, FASGE

John R. Saltzman, MD, FASGE
Brian J. Schwender, MD, FASGE
Reem Z. Sharaiha, MD, MSc
Uzma D. Siddiqui, MD, FASGE
Kamal A. Syed, MD
Joseph Vicari, MD, MBA, FASGE &
Susan Vicari, PharmD
Kenneth K. Wang, MD, FASGE
Jerome D. Wayne, MD, FASGE
Richard C.K. Wong, MD, FASGE
Kevin E. Woods, MD, MPH
Marc J. Zuckerman, MD, FASGE

Jade – Up to \$7,499

Augustin Attwell, MD, FASGE
David J. Bjorkman, MD, MSPH, FASGE
Patricia & Raymond Blake
Lawrence J. Brandt, MD, FASGE
Lisa Cassani, MD
Roger J. Charles, MD, FASGE
Krishnavel V. Chathadi, MD
William Chen, MD
Jennifer A. Christie, MD, FASGE
Gregory S. Cooper, MD

Gregory Cote, MD, MS, FASGE
Walter J. Coyle, MD, FASGE
Kathryn Dattomo
John M. DeWitt, MD, FASGE
Syed M. Abbas Fehmi, MD, MSc, FASGE
David E. Fleischer, MD, FASGE
Norio Fukami, MD, FASGE
Lisa Gangarosa, MD & Jim Harrison
Stephanie Hansel, MD, FASGE
Lyndon V. Hernandez, MD, MPH, FASGE

Sreenivasa S. Jonnalagadda, MD, FASGE
Vivek Kaul, MD, FASGE
Louis Y. Korman, MD, FASGE
Richard S. Kwon, MD
Ali Lankarani, MD
Linda S. Lee, MD
John G. Lieb II, MD, MSc, FASGE
Charles J. Lightdale, MD, FASGE
Jennifer R. Lightdale, MD, MPH, FASGE
Pramod Malik, MD, FASGE

Mariam Naveed, MD
Keith L. Obstein, MD, MPH, FASGE
Elizabeth O'Keefe
Bergein F. Overholt, MD, FASGE
Walter G. Park, MD
Cyrus R. Piraka, MD, FASGE
Doug Pleskow, MD, FASGE
Francisco C. Ramirez, MD
Amit Rastogi, MD, FASGE
Alessandro Repici, MD

Andrew S. Ross, MD, FASGE
Thomas J. Savides, MD, FASGE
Ali Siddiqui, MD
George Triadafilopoulos, MD, FASGE
Jacques Van Dam, MD, PhD, FASGE
Brian R. Weston, MD, FASGE
Louis M. Wong Kee Song, MD, FASGE
Julie Yang, MD
As of April 1, 2018

2017

**Thank you to our
generous donors!**

ASCE

Thank you to our generous donors!

ASGE graciously acknowledges the members, companies, and foundations and friends who generously support ASGE's mission to advance patient care and digestive health by promoting excellence and innovation in gastrointestinal endoscopy with their annual gifts to the ASGE Foundation.

Contributions from our generous donors help to underwrite many ASGE education, practice improvement, research and public outreach initiatives.

The following contributions to the ASGE Foundation were received between January 1 and December 31, 2017.

Corporate/ Foundation Donors

\$100,000 to \$499,999

Boston Scientific Corporation
Cook Medical
ERBE USA, Inc.
Ironwood Pharmaceuticals
Medtronic
Olympus Corporation of the Americas
PENTAX Medical Company

\$10,000 to \$99,999

AMSURG
Aries Pharmaceuticals, Inc
ConMed Endoscopic Technologies
CRH Medical Products Corporation
Ferring Pharmaceuticals
FUJIFILM Medical Systems USA, Inc.
Gastrointestinal Associates (GIA)
Torax Medical, Inc

\$5,000 to \$9,999

Indiana University Medical Center
Minnesota Gastroenterology
Merit Medical Endotek
US Endoscopy

\$1,000 to \$4,999

American College of Gastroenterology
Delaware Valley Society for
Gastrointestinal Endoscopy
HyGleaCare, Inc.
New York Society for Gastrointestinal
Endoscopy
Washington University GI Endoscopy Center

Individual Donors

Circle of Light Society Donors

15 Year - \$1,000 or more

John Baillie, MBChB, FASGE
Thomas M. Deas Jr., MD, MMM, FASGE
Steven A. Edmundowicz, MD, FASGE
Grace H. Elta, MD, FASGE
Douglas O. Faigel, MD, FASGE
Gary W. Falk, MD, MS, FASGE
M. Brian Fennerty, MD, FASGE
Lawrence S. Friedman, MD, FASGE
Douglas A. Howell, MD, FASGE
Michael B. Kimmey, MD, FASGE
Richard A. Kozarek, MD, FASGE
Kenneth R. McQuaid, MD, FASGE
Klaus Mergener, MD, PhD, MBA, FASGE
Bret T. Petersen, MD, FASGE
Bennett E. Roth, MD, FASGE
William M. Tierney, MD, FASGE
John J. Vargo II, MD, MPH, FASGE
Michael B. Wallace, MD, FASGE
Kenneth K. Wang, MD, FASGE

10 Year - \$1,000 or more

Anonymous
Mohammad Al-Haddad, MD, FASGE
Michelle A. Anderson, MD, MSc, FASGE
Dale Bachwich, MD
Edward S. Bentley, MD, FASGE
The Berk Society
David J. Bjorkman, MD, MSPH, FASGE
Patricia V. Blake, FASAE, CAE

Brian P. Bosworth, MD, FASGE
Brian C. Brauer, MD, FASGE
Maurice A. Cerulli, MD, FASGE
Robert F. Crochett Jr., MD
John A. Dumot, DO, FASGE
Charles E. Dye, MD
Glenn M. Eisen, MD, MPH, FASGE
Laurel R. Fisher, MD, FASGE
David E. Fleischer, MD, FASGE
Norio Fukami, MD, FASGE
Robert A. Ganz, MD, FASGE
Gregory G. Ginsberg, MD, FASGE
Ferga C. Gleeson, MD, FASGE
Deepak V. Gopal, MD, FASGE
Christopher J. Gostout, MD, FASGE
David A. Greenwald, MD, FASGE
Lyndon V. Hernandez, MD, MPH, FASGE
Gordon C. Hunt, MD, FASGE
Brian C. Jacobson, MD, MPH, FASGE
Tonya R. Kaltenbach, MD, MS, FASGE
Franklin E. Kasmin, MD, FASGE
Rajesh N. Keswani, MD
Glen A. Lehman, MD, FASGE
Michael J. Levy, MD
David A. Lieberman, MD, FASGE
Simon K. Lo, MD, FASGE
Arnold J. Markowitz, MD, FASGE
Mick S. Meiselman, MD, FASGE
V. Raman Muthusamy, MD, FASGE
John L. Petrini, MD, FASGE
Jeffrey L. Ponsky, MD, FASGE
John R. Saltzman, MD, FASGE
Colleen M. Schmitt, MD, MHS, FASGE
Brian J. Schwender, MD, FASGE
Uzma D. Siddiqui, MD, FASGE
Jerome H. Siegel, MD, FASGE
Francis J. Tedesco, MD, FASGE
Joseph J. Vicari, MD, MBA, FASGE
Mihir S. Wagh, MD, FASGE
Richard C.K. Wong, MD, FASGE
Karen L. Woods, MD, FASGE
Patrick Yachimski, MD, MPH, FASGE

5 Year - \$1,000 or more

Neena S. Abraham, MD, FASGE
Firas H. Al-Kawas, MD, FASGE
Joseph Ramón Armengol-Miro, MD
Harry R. Aslanian, MD, FASGE
Subhas Banerjee, MD, FASGE
Todd H. Baron Sr., MD, FASGE
Tamir Ben-Menachem, MD, MSc
Brett B. Bernstein, MD, FASGE
David L. Carr-Locke, MD, FRCP, FASGE
Brenna Casey, MD, FASGE
Ravi S. Chittajallu, MD
Jonathan Cohen, MD, FASGE
Timothy J. Cornnell, MD, FASGE
John M. DeWitt, MD, FASGE
Vinay Dhir, MD, FASGE
David L. Diehl, MD, FASGE
Jason A. Dominitz, MD, MHS, FASGE
Kulwinder S. Dua, MD, FASGE
John A. Dumot, DO, FASGE
Ashley L. Faulx, MD, FASGE
Andres Gelrud, MD, MMSc, FASGE
Patrick D. Gerstenberger, MD, FASGE
Victoria Gómez, MD
Frank Gress, MD, FASGE
Nalini Guda, MD, FASGE
Robert H. Hawes, MD, FASGE
Shakir Hyder, MD
Gerard A. Isenberg, MD, MBA, FASGE
Prasad G. Iyer, MD, MS, FASGE
F. Wilson Jackson, MD, FASGE
Laith H. Jamil, MD, FASGE
Charles J. Kahi, MD, FASGE
Ioannis Katsogridakis, MD
Jason B. Klapman, MD, FASGE
Sri Komanduri, MD, FASGE
Vani Konda, MD, FASGE
Shivangi Kothari, MD, FASGE
Ryan Law, DO
John A. Martin, MD, FASGE
Girish Mishra, MD, MSc, FASGE
Daniel K. Mullady, MD, FASGE

Faris M. Murad, MD, FASGE
 Mohamed Othman, MD
 Mohammed Abdul Qadeer, MD
 Douglas K. Rex, MD, FASGE
 Sarah “Betsy” Rodriguez, MD, FASGE
 Jason N. Rogart, MD, FASGE
 Andrew S. Ross, MD, FASGE
 Thomas J. Savides, MD, FASGE
 Raj J. Shah, MD, FASGE
 Vanessa M. Shami, MD, FASGE
 Reem Z. Sharaiha, MD, MSc
 Prateek Sharma, MD, FASGE
 Stavros Stavropoulos, MD, FASGE
 Carey B. Strom, MD, FASGE
 Kamal A. Syed, MD
 Hisao Tajiri, MD
 Scott M. Tenner, MD, MPH, FASGE
 Jacques Van Dam, MD, PhD, FASGE
 Andrew Y. Wang, MD, FASGE
 Jerome D. Wayne, MD, FASGE
 Timothy J. Wilmott
 Kevin E. Woods, MD, MPH
 Marc J. Zuckerman, MD, FASGE

Donor - \$1,000 or more

Barham Abu Dayyeh, MD, MPH
 John I. Allen, MD, FASGE
 Shirish A. Amin, MD
 Augustin Attwell, MD, FASGE
 Richard Aycock, MD
 H. Worth Boyce, MD, FASGE
 Anna M. Buchner, MD, PhD
 Amitabh Chak, MD, FASGE
 Gregory A. Cote, MD, MS, FASGE
 Kathryn Dattomo
 Jeff Dew
 Christopher J. DiMaio, MD, FASGE
 Marc Edelstein, MD
 Jeffrey P. Fenyes, MD, FASGE
 Alejandro Fernandez, MBA, CMPE
 James T. Frakes, MD, FASGE
 Joseph E. Geenen, MD, FASGE

Jeffrey S. Gilbert, MD
 Neil Gupta, MD, FASGE
 William J. Harb, MD
 Shayan S. Irani, MD, FASGE
 Priya A. Jamidar, MD, FASGE
 David A. Johnson, MD, FASGE
 Jennifer E. Jorgensen, MD, FASGE
 Prashant S. Kedia, MD
 Jeffrey Klingenstein, MD
 Santi Kulpatcharapong, MD
 Vivek Kumbhari, MD
 Nikhil A. Kumta, MD, MS
 Karl K. Kwok, MD
 Richard S. Kwon, MD
 James S. Leavitt, MD
 Glenn D. Littenberg, MD, FASGE
 Jonathan A. Leighton, MD, FASGE
 Koji Matsuda, MD, PhD
 Barry V. Maves, MD
 Matt Moore, MD
 Jeffry Nestler, MD
 Keith L. Obstein, MD, MPH, FASGE
 Charles M. O'Connor, MD
 Navin Paul, MD
 Irving M. Pike, MD, FASGE
 Mel Schapiro, MD, FASGE
 Ellen Scherl, MD, FASGE
 Robert E. Sedlack, MD, MHPE, FASGE
 Eun J. Shin, MD
 Roy M. Soetikno, MD, MS, FASGE
 Lisa Strate, MD, MPH
 Unmesh Takalkar, MD, FASGE
 Hillary S. Tompkins, MD
 Franklin Tsai, MD
 George Triadafilopoulos, MD, DSc, FASGE
 Leslie E. Tucker, MD
 Catharine Walsh, MD, PhD
 Rabindra Watson, MD
 James Weber, MD
 Brent Welch, MD, FASGE
 Sidney J. Winawer, MD, FASGE
 Gregory M. Woolfolk, MD, FASGE

Stewart R. Wright, MD
 Alvin M. Zfass, MD, FASGE

\$500-\$999

Sharmila Anandasabapathy, MD, FASGE
 Kedar R. Belhe, PhD, MBA
 Debra Bender
 Daniel L. Biery, MD, FASGE
 Michael J. Bourke, MD, MBBS
 Audrey Calderwood, MD, FASGE
 Frank J. Chapman, MBA
 Charles Cheng, MD
 Barry DeGregorio, MD
 James A. DiSario, MD, FASGE
 Imad M. Elkhatib, MD
 John C. Fang, MD
 Harold Frankl, MD
 Bruce L. Hennessy, MD, DO, FASGE
 Brenda J. Hoffman, MD, FASGE
 Avlin B. Imaeda, MD, PhD
 Costas H. Kefalas, MD, MMM, FASGE
 Steven D. Klein, MD
 Robert D. Lafsky, MD
 Joanna Law, MD
 David R. Lichtenstein, MD, FASGE
 Fauze Maluf-Filho, MD, FASGE
 Mack McCain, MD
 Thomas McCourt
 Uma K. Murthy, MD
 Erica Natal, BSN, MHA
 Chalmers Nunn Jr., MD
 D. Nageshwar Reddy, MD, FASGE
 Daniel L. Ridout, MD, FASGE
 David N. Roberts, MD, FASGE
 Antonio R. Rollan, MD
 Yvonne Romero, MD
 Richard I. Rothstein, MD
 Jennifer L. Seminerio, MD
 Malay Sharma, MD, DM
 Ravi P. Singh, MD
 Darius Sorbi, MD
 Arun C. Swaminath, MD

Christopher C. Thompson, MD, MHES, MSc, FASGE
 Sarah B. Umar, MD
 Stacie A. F. Vela, MD, FASGE
 Cynthia M. Yoshida, MD
 Daniel Zanchetti, MD

\$250-\$499

Anonymous
 Hiroyuki Aihara, MD, PhD, FASGE
 William Alvarez, MD
 Peter J. Baiocco, MD
 Gennadiy Bakis, MD
 Alberto Baptista, MD
 Kirk Bernadino, MD
 Motilal A. Bhatia, MD
 Mike M. Bismar, MD, FASGE
 Lisa Cassani, MD
 Bipan Chand, MD, FASGE
 Walter J. Coyle, MD, FASGE
 Viju P. Deenadayalu, MD
 John J. DeGuide, MD, FASGE
 Jerry C. Evans, MD
 Syed M. Abbas Fehmi, MD, MSc, FASGE
 Christopher E. Forsmark, MD
 Scott D. Fraser
 Anthony M. Gamboa III, MD
 Lauren B. Gerson, MD, MSc, FASGE
 Ingrid Gonzalez, MD
 Bruce D. Greenwald, MD
 Suraj Gupta, MD
 Joseph D. Hillam, MD
 Thomas F. Imperiale, MD
 Takao Itoi, MD, FASGE
 Dennis M. Jensen, MD
 Terry L. Jue, MD, FASGE
 Devendra S. Kahlon, MD
 Inessa Khaykis, MD, FASGE
 Masayuki Kitano, MD, PhD
 Ann M. Kools, MD
 Louis Y. Korman, MD, FASGE
 John G. Kuldau, MD
 Fern C. Lazar

Petar Mamula, MD, FASGE
 Michael J. Manley, MD, FASGE
 John T. Maple, DO, FASGE
 Jennifer L. Maranki, MD
 Howard S. Mitz, DO
 Divyanshu Mohananey, MD
 Yukio Nakajima
 Matthew Nikoloff, MD
 Caterina M. Oneto, MD
 Rahul Pannala, MD, MPH, FASGE
 Walter G. Park, MD
 Steve L. Peterson, MBA
 Catherine D. Popkin, MD
 Violeta Popov, MD
 Amit Rastogi, MD, FASGE
 Jean-Francois Rey, MD, FASGE
 David H. Robbins, MD, FASGE
 Paulo Sakai, MD, FASGE
 Jeffrey S. Sams, MD, FASGE
 Martin Schmidt, MD
 Carol E. Semrad, MD
 Piyush Omprakash Somani, DM
 John R. Stroehlein, MD, FASGE
 Shelby A. Sullivan, MD
 Claude Tihon
 Yutaka Tomizawa, MD
 David I. Weinberg, MD
 Douglas M. Weissman, MD, FACP
 Kenneth M. Yamashiro, MD
 Ihor Zakaluzny, MD

\$101- \$249

Manal F. Abdelmalek, MD
 Elie M. Abemayor, MD
 Satya B. Allaparthi, MD
 Suliman Alshankiti, FRCPC
 Marco A. Alvarez-Gonzalez, MD, PhD
 Gretchen N. Anderson, DO
 Louis V. Antignano, MD
 Jesus A. Armenta, MD
 Paul Arnold, MD
 Carlos L. Ascarrun, MD

Robert J. Bailey, MD
 Johan C. Bakken, MD, FASGE
 John T. Barbagiovanni, DO
 Faraz F. Berjis, MD
 C. Scott Boagni, MD
 David S. Borislow, MD
 Daniel E. Brady, MD
 Steven Brozinsky, MD
 Klaus L. Buxbaum, MD
 Sing Chan, MD
 Huilan Cheng, MD
 Jennifer A. Christie, MD, FASGE
 Emily M. Christman, MD
 David P. Cohen, MD
 Atanagildo Cortes Jr., MD
 Daniel R. Cummings, MD
 Robert B. Cusworth, MD
 Murali Dharan, MD, FASGE
 Ujagger S. Dhillon, MD
 Susana Escalante-Glorsky, MD
 Alec H. Esker, MD
 Margaret Eugenio, MD
 Richard M. Farleigh, MD
 Charles M. Farr, MD
 Steven Fleisher, MD
 Charles N. Friedlander, MD
 Eric R. Frizzell, MD
 Luis F. Frugone, MD
 Takahiro Fujii, MD
 Gregory R. Gambla, DO
 Mario Garretto, MD
 Arthur J. Geller, MD
 Jerome E. Goldwasser, MD
 Eder Guerra, MD
 Jason Gutman, MD
 Nadim G. Haddad, MD
 Marcus Tulio Bassul Haddad Filho, MD
 Fares S. Hakim, MD, FASGE
 Ryan D. Hamby, DO
 Takenao Hasegawa, MD
 Hilary I. Hertan, MD

Mehra Hosseini, MD
 Thomas P. Huber, MD
 Michael E. Humphrey, MD
 Tri H. Huynh, DO
 Noriyuki Isohata, MD
 Christopher Jordan, MD
 Toufic Kachaamy, MD
 Jeffrey S. Kalman, MD
 Jayaprakash Kamath, MD
 Sergey V. Kantsevov, MD, PhD
 Steven R. Kaplan, MD
 Arun Khazanchi, MD
 Angsom Kibreab, MD
 Jin-Hong Kim, MD
 Richard Kim, MD
 Stephen Kim, MD
 Sumit Kohli, MD
 Bart A. Kummer, MD
 Vladimir M. Kushnir, MD, FASGE
 Jong Min Lee, MD
 Harvey B. Lefton, MD, FASGE
 Stephen M. Lipkin, MD
 John Losurdo, MD
 Christopher J. Magiera, MD
 Richard J. Mailloux, MD
 Siva T. Maran, MD, FASGE
 Luis Alberto Marin Calderon, MD
 Francisco J. Marrero, MD
 Simona Meca, MD
 Lawrence Mills Jr., MD
 Gordon A. Millspaugh, MD
 Hitomi Minami, MD, PhD, FASGE
 Hideki Mitooka, MD
 Maury K. Morrison, MD
 Franco Orellana, MD
 Pravinchandra H. Patel, MD
 Joshua D. Penfield, MD
 Lirio S. Polintan, MD
 Eric A. Pollack, MD
 Terry P. Ponich, MD
 Glen L. Portwood, MD

Charles W. Randall, MD
 Alessandro Repici, MD
 Robert Ricci, MD
 Ara S. Sahakian, MD
 Tahira Saifuddin, MD
 Tamer Sargios, MD
 Yolanda V. Scarlett, MD
 Troy D. Schmidt, MD
 Werner Schwizer, MD
 Jatinder Sekhon, MD
 Joseph G. Shami, MD
 Daniel J. Sher, MD
 Alan F. Shikoh, MD
 Rajeev K. Shrivastava, MD
 Benjamin N. Smith, MD
 Andreas M. Stefan, MD
 Iyad M. Subei, MD, FASGE
 Marc A. Subik, MD
 Kempanna Sudhakar, MD
 Edward Sun, MD
 Yasunaga Suzuki, MD
 Mark E. Tanchel, MD
 Alan M. Tarshis, MD
 James A. Taterka, MD
 Stanley A. Toelle, MD
 Ho K. Tong, MD
 Atul Vahi, MD
 Jan Van Hattum, MD, PhD
 Carlos J. Velasquez Carrillo, MD
 Thomas P. Whelan, MD
 Louis J. Wilson, MD
 Dennis T. Yamamoto, MD
 Yunsheng Yang, MD
 Mitsunori Yasuda, MD, PhD
 Adel I. Youssef, MD
 Richard E. Zander, MD
 Jusuf Zlatanic, MD

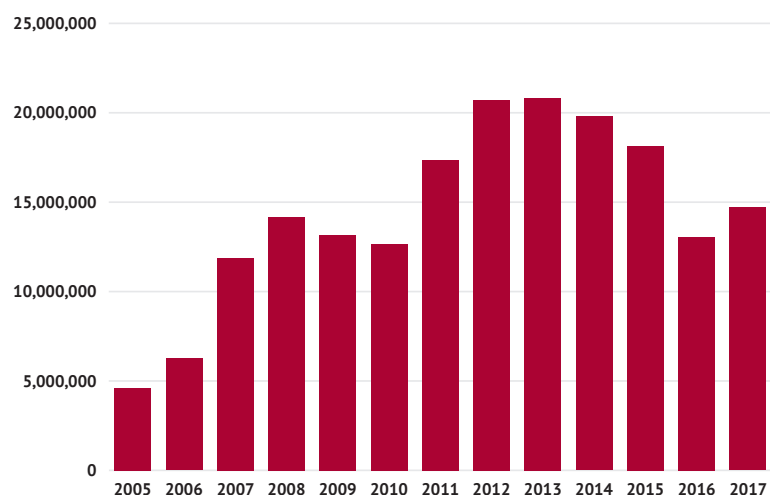
The ASGE Foundation also thanks donors who supported the Foundation in 2017 with donations of \$100 or less. Every donation makes a difference.

2017 Financial Statements

American Society for Gastrointestinal Endoscopy (ASGE) Foundation Statement of Financial Position as of December 31, 2017 and 2016

	12/31/17	12/31/16
TOTAL ASSETS	\$ 21,499,418	\$ 19,976,958
TOTAL LIABILITIES	3,813	161,547
NET ASSETS:		
Unrestricted Fund	14,707,870	13,067,370
Temporarily Restricted	1,633,438	1,745,280
Permanently Restricted	5,154,297	5,002,761
TOTAL NET ASSETS	\$ 21,495,605	\$ 19,815,411

ASGE Foundation Net Assets as of December 31, 2017



The decrease in the ASGE Foundation's net assets shown in 2014-2016 is mainly due to budgeted transfers of funds from the IT&T Capital Campaign to the Society to support operations of the Institute for Training and Technology.

Statement of Activities for the Twelve Months Ending December 31, 2017

	Unrestricted	Temporary Restriction	Permanent Restriction
REVENUES			
Other Income	\$ 4,130	\$ —	\$ —
Special Events	53,617	—	—
Contributions	1,845,788	91,775	151,536
Grants	—	65,705	—
Affiliate Transfer	-705,543	—	—
Net Assets Released From Restriction	1,214,406	-1,214,406	—
TOTAL REVENUES	2,412,398	-1,056,926	151,536
TOTAL EXPENSES	1,189,106	—	—
REVENUES OVER EXPENSES	1,223,292	-1,056,926	151,536
TOTAL INVESTING ACTIVITY	417,208	945,085	—
INCREASE IN NET ASSETS	1,640,500	-111,842	151,536
Net Assets, Beginning of Year	13,067,370	1,745,280	5,002,761
Net Assets End of Period	14,707,870	1,633,438	5,154,297

ASGE and ASGE Foundation audit report and financial statements are available upon request.

Foundation Board of Trustees 2017-2018

Chair

John L. Petrini, MD, FASGE

Vice Chair

Klaus Mergener, MD, PhD, MBA, FASGE

Treasurer

Mick S. Meiselman, MD, FASGE

ASGE President-elect

Steven A. Edmundowicz, MD, FASGE

ASGE Treasurer

Douglas K. Rex, MD, FASGE

Trustee

Ashley L. Faulx, MD, FASGE

Trustee

Arnold J. Markowitz, MD, FASGE

Trustee

Thomas A. McCourt

Trustee

Colleen M. Schmitt, MD, MHS, FASGE

Trustee

Carey B. Strom, MD, FASGE

Trustee

Barry Tanner

Trustee

Timothy J. Wilmott

Governing Board 2017-2018

President

Karen L. Woods, MD, FASGE

President-elect

Steven A. Edmundowicz, MD, FASGE

Secretary

John J. Vargo II, MD, MPH, FASGE

Treasurer

Douglas K. Rex, MD, FASGE

Secretary-elect

Bret T. Petersen, MD, FASGE

Past President

Kenneth R. McQuaid, MD, FASGE

Past President

Douglas O. Faigel, MD, FASGE

Councilor

Michelle A. Anderson, MD, MSc, FASGE

Councilor

Subhas Banerjee, MD, FASGE

Councilor

Jason A. Dominitz, MD, MHS, FASGE

Councilor

John A. Martin, MD, FASGE

Councilor

Vanessa M. Shami, MD, FASGE

Councilor

Prateek Sharma, MD, FASGE

Foundation Chair

John L. Petrini, MD, FASGE

Staff

Chief Executive Officer

Patricia Blake, FASAE, CAE

Chief Financial Officer

Shari Franklin, CPA, CTP

Executive Director of the ASGE Foundation

Kathryn Dattomo, CFRE, CAE

Senior Manager of the ASGE Foundation

Ashley Gill, CFRE



Ways To Give



Make a gift online.
www.asge.org/foundation



Call 1.866.353.ASGE (2743) to donate.



Download a donation form at
www.asge.org/foundation



Contact us for instructions on
making a gift of stock.



Contact Us

ASGE Foundation
3300 Woodcreek Drive
Downers Grove, Illinois 60515
Phone: (630) 573-0600
Fax: (630) 963-8332
foundation@asge.org
www.asge.org

Our best efforts have been made to determine the accuracy of this report. We appreciate the opportunity to correct our records. If your name has been omitted or misrepresented, please accept our sincere apologies and contact the ASGE Foundation.

Contributions to the ASGE Foundation are deductible for current income tax purposes to the extent provided by law.