



American Society for
Gastrointestinal Endoscopy

PRACTICAL SOLUTIONS FOR THE GI PRACTICE

Improving Quality and Safety in Your Endoscopy Unit

February 29, 2020

September 19, 2020

ASGE Institute for Training and Technology
Downers Grove, Illinois

Three ways to participate!
In Person • Live Stream • On-Demand

COURSE DIRECTORS

February 29, 2020

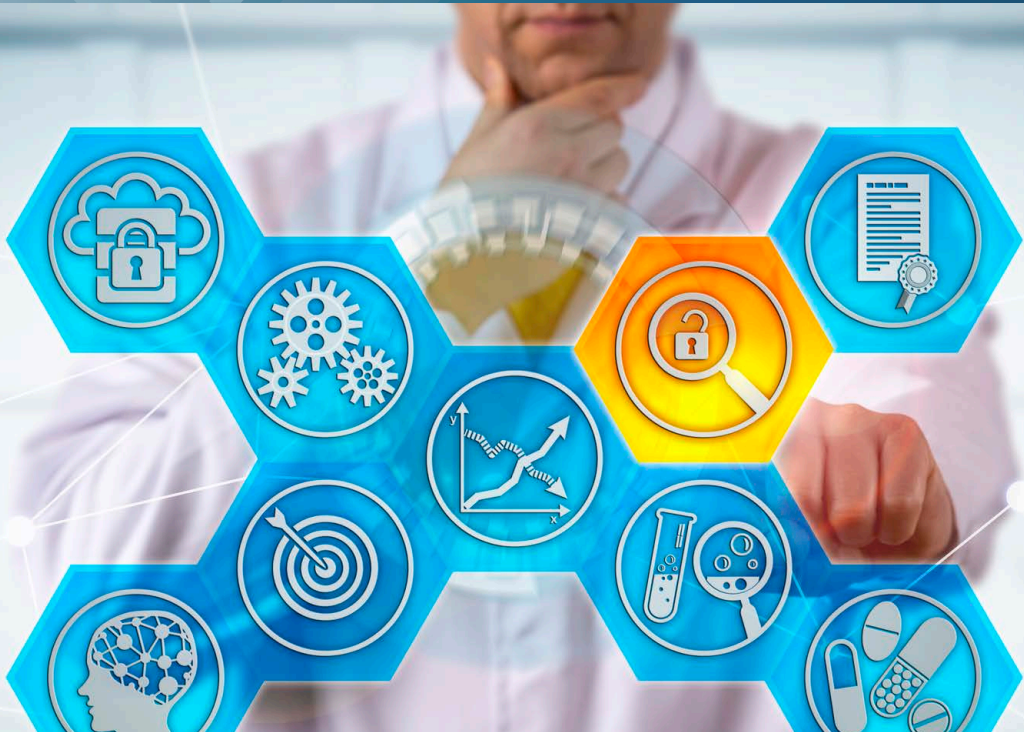
Rajesh N. Keswani, MD
Northwestern Medicine
Chicago, IL

Eun Ji Shin, MD
Johns Hopkins University
Baltimore, MD

September 19, 2020

Rajesh N. Keswani, MD
Northwestern Medicine
Chicago, IL

Aasma Shaukat, MD, MPH
Minneapolis VAMC
University of Minnesota
Minneapolis, MN



Early Registration Discounts End • January 23, 2020 • August 13, 2020

Register Online at asge.org



COURSE DESCRIPTION

This highly popular course was developed by ASGE to educate physicians and non-physician staff of endoscopy units on how to translate quality and safety concepts into everyday practice. Through a mixture of didactic lecture and interactive sessions taught by leading experts in the field, participants of the course will advance their knowledge of endoscopy unit quality and safety, as well as discuss emerging trends and evidence. They will also be prepared to apply for the ASGE Endoscopy Unit Recognition Program or be able to renew their current participation.

WHAT YOU WILL LEARN

Upon completion of this educational activity, participants will be able to:

- Identify ways to define and measure quality in endoscopy
- Describe techniques to make endoscopy more efficient while maintaining safety
- Describe methods to improve patient satisfaction in endoscopy, including improved doctor-patient communication
- Recognize the potential sources of infection from contact with various body fluids, their transmissibility during gastrointestinal endoscopy, and their susceptibility to potential disinfectants
- Specify measures for improving unit quality, including training and credentialing for new procedures, quality assurance programs, sedation and monitoring, and unit accreditation and re-accreditation

WHO SHOULD ATTEND

Practicing gastrointestinal endoscopists and surgeons, medical directors, nurse managers, unit managers and allied professionals interested in advancing their knowledge in endoscopy unit quality and safety.

Units interested in applying for the ASGE Endoscopy Unit Recognition Program (EURP) or renewing their ASGE EURP Certificate are encouraged to send both a physician and a non-physician manager to the course. Program eligibility criteria require completion of this course by at least one unit representative in person within one year prior to program application for newly applying units and by at least one unit representative via any modality within one year prior to recognition expiration for renewing units.



Improving Quality and Safety in Your Endoscopy Unit

AGENDA

6:30 – 7:30 AM

REGISTRATION
CONTINENTAL BREAKFAST & EXHIBITS

7:30 – 7:40 AM

Course Directors' Welcome & Introductions

7:40 – 8:10 AM

What Constitutes a High-Quality Endoscopy Unit?

8:10 – 8:40 AM

Quality Indicators for Colonoscopy

8:40 – 9:10 AM

Advanced Endoscopy and Upper GI Bleeding Quality Indicators

9:10 – 9:30 AM

Round Table Discussion I: Defining and Measuring Quality in Endoscopy

9:30 – 9:50 AM

BREAK & EXHIBITS

9:50 – 10:15 AM

Optimizing Bowel Preparation in Your Endoscopy Unit

10:15 – 10:40 AM

Unlocking the Doors to Patient Satisfaction

10:40 – 11:10 AM

Improving Efficiency in the Endoscopy Unit

11:10 – 11:30 AM

Round Table Discussion II: Establishing and Maintaining a High-Quality Endoscopy Unit

11:30 AM – 12:30 PM

NETWORKING BUFFET LUNCH

12:30 – 12:50 PM

Infection Control in Endoscopy: Global Overview

12:50 – 1:10 PM

Infection Control in Endoscopy: The Nuts and Bolts

1:10 – 1:30 PM

Infection Control Q&A

1:30 – 1:50 PM

BREAK & EXHIBITS

1:50 – 2:10 PM

Preparing for a Successful Endoscopy Unit Survey Accreditation

2:10 – 2:30 PM

Enhancing the Employee Experience, Maintaining Staff Morale and Managing a Disruptive Staff Member

2:30 – 2:50 PM

How to Safely Introduce New Technology in Your Endoscopy Unit

2:50 – 3:10 PM

Round Table Discussion III: Creating a Quality Culture

3:10 – 4:15 PM

Case Study Forum: Practical Solutions for Your Most Pressing Quality and Safety Issues

4:15 – 4:30 PM

Closing Remarks and Course Adjournment

Agenda subject to change.

Register online at www.asge.org





Hotel Accommodations

It is recommended that you make your hotel reservations as soon as possible. However, you may want to wait to make your airline reservations until you have received confirmation of registration from ASGE.

Marriott Suites Downers Grove

1500 Opus Place Downers Grove, IL 60515

Marriott Reservations: Toll Free: 800-228-9290 or Tel: 630-852-1500

ASGE has arranged a room block for this course at \$109 per night plus applicable tax. This discount is valid only if the reservation is made by the following deadlines:

February 29 course Reserve by February 7

September 19 course Reserve by August 28

Please contact the hotel directly to make hotel reservations and mention the name of the ASGE course when you do so.

A free shuttle will be provided between the hotel and the ASGE Institute for Training and Technology.

Continuing Medical Education

The American Society for Gastrointestinal Endoscopy (ASGE) is accredited by the Accreditation Council for Continuing Medical Education to provide continuing medical education for physicians.

ASGE designates this live activity for a maximum of 7.0 *AMA PRA Category 1 Credits™*. Physicians should claim only the credit commensurate with the extent of their participation in the activity.

ASGE Cancellation Policy

Request for refunds must be requested in writing, no later than three weeks prior to the course. Refunds are subject to an administrative fee of \$100. Attendee substitutions are permitted with ASGE authorization. ASGE has the right to cancel a program at any time at its discretion.

Industry representatives interested in attending this course must contact Linda Kay Tyler, Senior Director, Sales and Business Development at (630) 570-5601 or lt Tyler@asge.org) In compliance with ACCME guidelines, industry representatives may not participate in hands-on training or ask questions during a CME course.

For more information about this or upcoming ASGE educational courses, visit www.asge.org, email education@asge.org or call ASGE Customer Care at 630-573-0600.

Photographer Waiver: ASGE periodically takes photographs and/or video during our events, and reproduces them in ASGE education, news or promotional material, whether in print, electronic or other media. By participating in this course, you grant the right to use your name and photograph for such purposes to ASGE. All postings become property of ASGE.



Support the ASGE Foundation

Educational programming is supported, in part, by the ASGE Foundation. To donate, visit asge.org.

IMPROVING QUALITY AND SAFETY IN YOUR ENDOSCOPY UNIT REGISTRATION

Early Registration Deadline
January 23, 2020 for February 29 course
August 13, 2020 for September 19 course

THREE WAYS TO PARTICIPATE!

1. In Person 2. Live Stream 3. On Demand

» Saturday, February 29, 2020

» Saturday, September 19, 2020

Registration Fees	On or before Early Bird	After Early Bird
ASGE Physician Member	<input type="checkbox"/> \$450	<input type="checkbox"/> \$550
Physician Non-Member	<input type="checkbox"/> \$550	<input type="checkbox"/> \$650
ASGE Trainee/ Nurse Member	<input type="checkbox"/> \$450	<input type="checkbox"/> \$550
Non-Member Trainee/Nurse	<input type="checkbox"/> \$550	<input type="checkbox"/> \$650

Endoscopy Unit Recognition Program (EURP) Honorees:

Contact ASGE Customer Care at 630-573-0600 for special discounted pricing.

Not an ASGE Member?

Save even more when you join ASGE prior to registration for this course.
Visit www.asge.org/join to join today!

Registration Form

Course date for registration:

Saturday, February 29, 2020 Saturday, September 19, 2020

Name _____ Date _____

Title _____ Academic Degree(s) _____

Institution _____ NPI# _____ Specialty _____

Address _____

City _____ State _____ Zip _____ Country _____

Email _____ Phone _____ Fax _____

This information is my: Home Work ASGE Member? Yes No

Four Easy Ways to Register

1. Online at www.asge.org (Recommended)

2. Phone: 630-573-0600

3. Fax: 630-963-8332

Credit Card: Visa MasterCard American Express Discover

Cardholder name: _____ (please print) Card number _____

Expiration Date _____ Signature _____

4. Mail: I've enclosed a check for \$ _____ made payable to:

American Society for Gastrointestinal Endoscopy,
PO Box 809055, Chicago, IL 60680-9055

For all registration inquiries, email ASGE Customer Care at info@asge.org or call 630-573-0600.