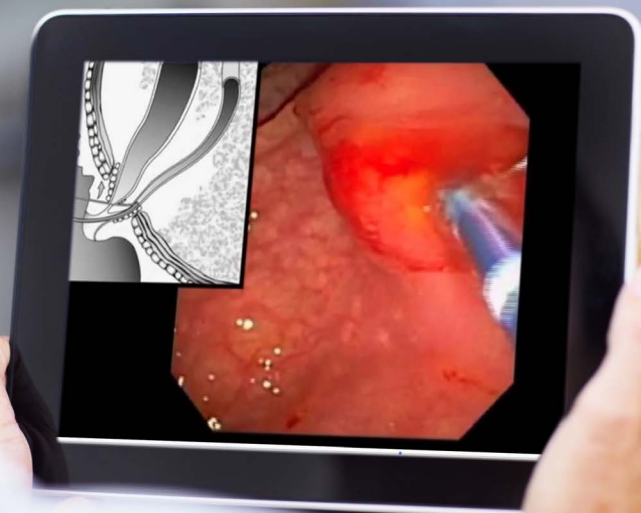


ENDOSCOPY'S MOST COMPREHENSIVE CME VIDEO COLLECTION



ASGE

ENDOSCOPIC LEARNING LIBRARY

NEARLY 50 CLINICAL EDUCATION VIDEOS

COLORECTAL • ERCP • EUS

GI BLEEDING • UPPER GI • SMALL BOWEL



LOOK INSIDE
FOR VALUABLE
SAVINGS

CONTENTS

ASGE Online Learning Center	3
Set of New DVDs for 2017	4
Colorectal	
NEW! Evaluation of the Anorectum: Physical and Endoscopic Examinations	5
Endoscopic Mucosal Resection – A Comprehensive Learning Tool	5
Diagnostic and Therapeutic Endoscopy in Patients after Ileal Pouch Surgery	5
Colonoscopy Set	5
Polyposis Syndrome/Genetic GI: Endoscopic Diagnosis and Management	6
Colonoscopy Technique: Basic and Advanced – 2nd Edition	6
Colonoscopic Polypectomy – 2nd Edition	6
Endoscopic Mucosal Resection – LGI	7
Diagnosis of Flat and Depressed Colorectal Neoplasms	7
Endoscopic Submucosal Dissection of Colon Lateral Spreading Tumor	7
Hemorrhoids Set	8
Office-Based, Non-Endoscopic Treatments for Hemorrhoids	8
Endoscopic Approach to Hemorrhoids	8
Optical Diagnosis of Colorectal Polyps	8
ERCP	
Endoscopic Retrograde Cholangiogram for Benign Biliary Diseases	8
Techniques of Endoscopic Therapy in Pancreatic Disorders	9
Endoscopic Papillectomy for Tumors of the Major Duodenal Papilla	9
Biliary Access Techniques for ERCP: From Basic to Advanced	9
ERCP Set	9
EUS	
NEW! Endoscopic Management of Necrotizing Pancreatitis and Pseudocysts	10
EUS-Guided Biliary Drainage: Current Techniques	10
NEW! The Role of Endoscopic Ultrasound in Evaluation of Lung Cancer	10
ABCs of EUS: A Complete Roadmap	11
Therapeutic EUS	11
A Primer to Hepato-Pancreato-Biliary (HPB) EUS	11
EUS Guided Tissue Sampling Techniques: Cytology & Biopsy	11
Paradigm Shift in Endoscopic Management of Peri-pancreatic Fluid Collection	11
EUS Set	11

Not an ASGE member? Learn how you can immediately access exclusive member pricing under the Provisional Membership program. For details and to apply for ASGE membership, visit www.asge.org, contact the Customer Care Team at 630-573-0600, or e-mail membership@asge.org.

GI Bleeding	
Endoscopic Gluing Technique Using the Cyanoacrylate Super Glue	12
Anorectal Bleeding	12
Techniques of Hemostasis for Non-variceal Upper Gastrointestinal Bleeding	12
Endoscopic Management of Variceal Hemorrhage in Cirrhosis	12
Endoscopic Interpretation and Therapy of Severe Lower GI Bleeding	13
Upper GI	
Endoscopic Treatment of Zenker's Diverticulum: Principles and Techniques for Successful Flexible Endoscopic Myotomy	13
Esophageal Introitus	13
Bariatrics Set	14
Per-Oral Endoscopic Myotomy (POEM) for Achalasia .	14
The Detection, Diagnosis and Treatment of Superficial Nonpolypoid Barrett's Neoplasia – A Potential New Approach	14
The Bariatric Patient: Endoscopic Diagnosis and Management	14
Bariatric Surgery – An Instructional Program for GI Endoscopists	14
Endoscopic Management of Early Stage Cancers of the Esophagus and Stomach	15
Endoscopic Techniques for Enteral Access in Nutritional Support	15
Endoscopic Tissue Sampling of the Upper GI Tract: From Forceps to Optical	15
Endoscopic Treatment of Achalasia	15
Upper GI Cancer Set	15
Endoscopic Management of Barrett's Esophagus	16
Diagnosis and Treatment of Early Gastric Cancer	16
Endoscopic Removal of Foreign Bodies in Upper Gastrointestinal Tract	16
Therapeutic Endoscopy for Strictures of the Upper Digestive Tract	16
Small Bowel	
Video Capsule Endoscopy: The Basics & Beyond	17
Small Bowel Imaging	17
Other Clinical & Non-Clinical GI Topics	
NEW! Taking Care of You: Ergonomic Essentials for Your Practice	17
Troubleshooting Commonly Encountered Problems with the Endoscope	18
Endoscopic Features of Lymphoproliferative Diseases	18
Image Enhanced Endoscopy	18
Ileocecum	18
Full Endoscopic Learning Library	13
ASGE Order Form	19

Online educational resources for every GI practice – anytime, anywhere

As your 24/7 portal for educational and practice-enhancing resources in the field of endoscopy, you will find **more than 300** activities and tools on a variety of key topics. Solutions for you and your practice are available wherever you are and whenever you need them.

Exclusive Endoscopic Learning Library Videos On-Demand

In addition to instant online access to nearly **50 clinical education videos**, enjoy discounted pricing, free content, Spanish and Chinese versions, as well as **exclusive titles** such as:

- Endoscopic Treatment of Achalasia (OLV003)
- Optical Diagnosis of Colorectal Polyps (OLV004)
- Paradigm Shift in Endoscopic Management of Peri-pancreatic Fluid Collection (OLV005)
- Endoscopic Features of Lymphoproliferative Diseases (OLV006)
- Natural Orifice Transluminal Endoscopic Surgery: Current Status and Future Perspective (OLV007)
- Confocal Laser Endomicroscopy in Gastroenterology: Where Are We Now and Where Should We Go? (OLV008)
- 3rd Space Endoscopy – The New Frontier of Endoscopic Intervention (OLV009)
- Chromoendoscopy with Targeted Biopsy to Detect Nonpolypoid Colorectal Neoplasms (DV065)

GESAP VIII

Take advantage of a fully-interactive online endoscopy self-assessment with images and videos, **370+** peer-reviewed questions offered as **10 study modules** by topic area, real-life scenarios, a rationale for each correct answer, links to other question-enhancing ASGE resources, as well as the latest references. Plus earn up to **113 ABIM MOC points** and **50 CME credits**.

Recorded Courses

Browse **nearly 100** video recordings of current and past ASGE Annual Postgraduate Courses held at DDW®.

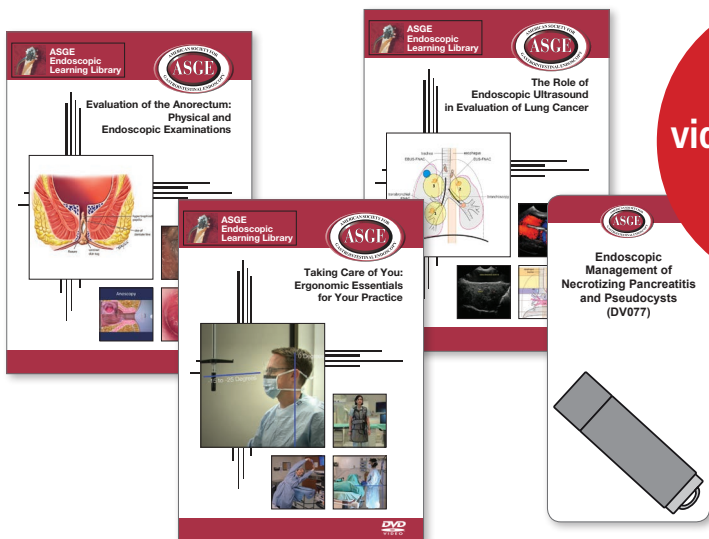
Video Plenary and World Cup Selections

Watch DDW® videos from around the world that feature **interesting endoscopic cases or techniques** in the field of gastrointestinal endoscopy. Free access for ASGE members.

Online Coding Resources

Access a variety of online tools, some of which are free to ASGE members, to educate the entire team year-round, and help ensure your practice is coding accurately and maximizing revenue. Improve the business operations of your practice with practical solutions from ASGE.

Experience the Breadth of the ASGE Endoscopic Learning Library



New
procedure
videos on critical
endoscopy
topics!

Nearly 50 titles are available through the **Endoscopic Learning Library**, making ASGE the undisputed leader in endoscopy video education. With **full-color, live-action** content on key procedures and conditions presented by some of the most well-known experts in the GI field, you will be able to benefit from a robust learning experience that goes beyond simple didactic instruction. Plus enjoy the ability to earn **valuable CME credits** with most titles.

Continuing Medical Education

ASGE is accredited by the Accreditation Council for Continuing Medical Education to provide continuing medical education for physicians. ASGE designates these enduring materials for the stated maximum number of *AMA PRA Category 1 Credits™*. Participants should claim only the credit commensurate with the extent of their participation in the activity.

For more information about claiming *AMA PRA Category 1 Credit™* for activities in the Endoscopic Learning Library, visit www.asge.org.

Get the Latest GI Insight

Year after year, the ASGE Endoscopic Learning Library continues to expand, while providing the latest information on only the most critical GI topics. Our newest videos are a great place to start your collection with what's current in GI endoscopy:

Evaluation of the Anorectum: Physical and Endoscopic Examinations (DV073)

Page 5

Taking Care of You: Ergonomic Essentials for Your Practice (DV074)

Page 17

The Role of Endoscopic Ultrasound in Evaluation of Lung Cancer (DV075)

Page 10

Endoscopic Management of Necrotizing Pancreatitis and Pseudocysts (DV077)

Page 10

Set of New DVDs for 2017

Save 10% by purchasing DV073, DV074, DV075, and DV077 as a bundled video set.

DV202 Member \$450

DV202 Non-Member \$630

ASGE members save 28%

Evaluation of the Anorectum: Physical and Endoscopic Examinations

Mitchel Guttenplan, MD, FACS and Waqar A. Qureshi, MD, FASGE

Hemorrhoids, fissures and other anorectal disorders are common and often presented to the gastroenterologist for evaluation and treatment. Colonoscopy has several limitations in these patients.

A good anorectal physical examination along with anoscopy is essential. This DVD describes and demonstrates the physical examination and anoscopy, and some "tips and tricks" to maximize the benefit of flexible endoscopy. The treatment of some of these clinical issues are also discussed.

[2017 – TRT 57:00] *1.00 CME Credit*

DV073 Member \$125

DV073 Non-Member \$175

ASGE members save 28%



Endoscopic Mucosal Resection – A Comprehensive Learning Tool

Michael J. Bourke, MBBS, MD, Amir Klein, MD, David J. Tate, MBBS, Farzan F. Bahin, MBBS, and Nicholas Burgess, MBChB

A systematic evidence-based approach that takes the viewer step-by-step through the various aspects of colonic EMR. The key components of pre-procedural patient assessment including indications and relative contraindications to the procedure are outlined. A detailed technical overview of lesion assessment, equipment and resection technique is provided. Multiple examples, different scenarios and expert tips to improve efficiency and safety are included.

[2016 – TRT 57:00] *1.00 CME Credit*

DV071 Member \$125

DV071 Non-Member \$175

ASGE members save 28%

*Online Learning Center

Diagnostic and Therapeutic Endoscopy in Patients after Ileal Pouch Surgery

Francis A. Farraye, MD, MSc, FASGE and Bo Shen, MD, FASGE

For gastroenterologists, recognition of the normal anatomy of various forms of the ileal pouch can be challenging. Get stepwise teaching materials to help understand the anatomy of the ileal pouches, various forms of mechanical and inflammatory diseases. Also, learn endoscopic treatment modalities in various pouch disorders, ranging from balloon dilation of stricture to needle knife treatment of anastomotic sinus.

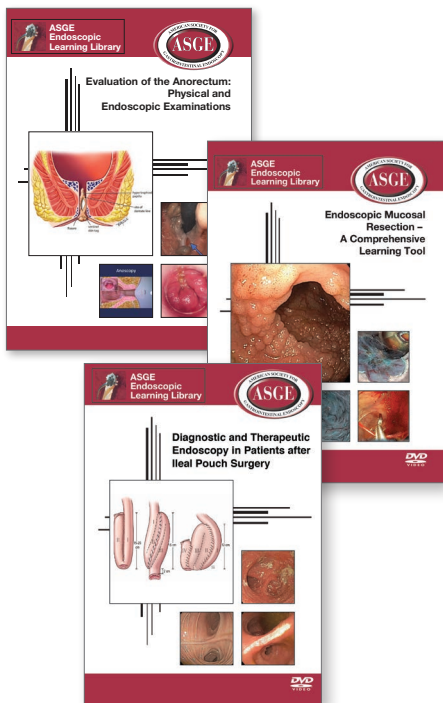
[2015 – TRT 1:05:00] *1.00 CME Credit*

DV067 Member \$125

DV067 Non-Member \$175

ASGE members save 28%

*Online Learning Center



*Online Learning Center – this item is also available for purchase and viewing through the ASGE Online Learning Center.

Colonoscopy Set

Save 10% by purchasing DV055 & DV056 as a bundled video set. You can also purchase this set in Spanish.

DV208 (DV208s – Spanish) Member \$225

DV208 (DV208s – Spanish) Non-Member \$315

ASGE members save 28%

COLORECTAL

Polyposis Syndrome/Genetic GI: Endoscopic Diagnosis and Management

Vinay Chandrasekhara, MD, Anil K. Rustgi, MD, Timothy C. Hoops, MD, Michael L. Kochman, MD, FASGE, and Gregory G. Ginsberg, MD, FASGE

Get insight on hereditary polyposis syndromes including hereditary nonpolyposis colorectal cancer, familial adenomatous polyposis, Peutz Jeghers syndrome, juvenile polyposis syndrome, Cowden syndrome, and serrated polyposis syndrome with an emphasis on the gastrointestinal manifestations of these diseases. The DVD focuses on the endoscopic appearance of these diseases in the GI tract and the endoscopic management of such diseases.

[2015 – TRT 1:00:00] **1.00 CME Credit**

DV068 Member \$125

DV068 Non-Member \$175

ASGE members save 28%

*Online Learning Center

Colonoscopy Technique: Basic and Advanced – 2nd Edition

Also available in Spanish.

Douglas K. Rex, MD, FASGE

Some of the most critical aspects of a colonoscopy are highlighted including informed consent, selecting the type of colonoscope, understanding tip deflection, anatomic landmarks in the colon, colonoscopic insertion technique, intubation of the terminal ileum, the impact of sedation on technique, maintaining safety during colonoscope insertion, and more. Polypectomy is covered in DV056.

[2013 – TRT 1:43:00] **1.75 CME Credits**

DV055 (DV055s – Spanish) Member \$125

DV055 (DV055s – Spanish) Non-Member \$175

ASGE members save 28%

*Online Learning Center

BEST SELLER

Colonoscopic Polypectomy – 2nd Edition

Also available in Spanish.

Douglas K. Rex, MD, FASGE

Topics covered include visual analysis of polyps prior to resection; safety issues in polypectomy; techniques in polypectomy; high-risk polypectomy, such as large pedunculated polyps and large sessile polyps; the use of ancillary techniques, including detachable snares, clipping, and tattooing; polyp retrieval; the principal complications of polypectomy and their management; and postpolypectomy surveillance.

[2013 – TRT 3:50:00] **4.00 CME Credits**

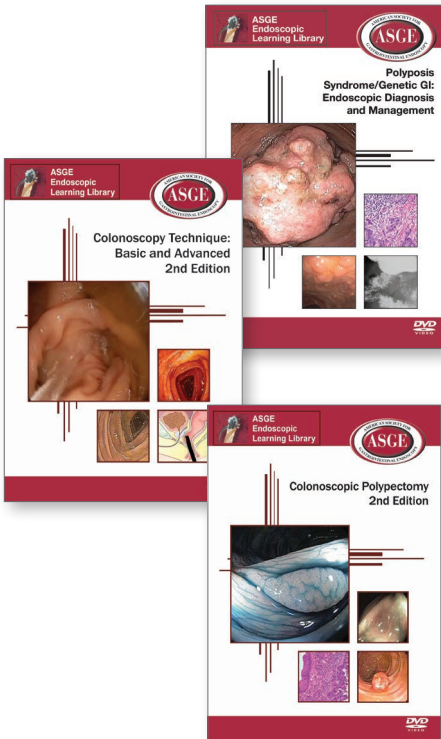
DV056 (DV056s – Spanish) Member \$125

DV056 (DV056s – Spanish) Non-Member \$175

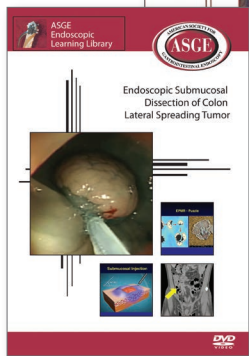
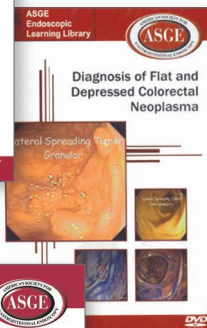
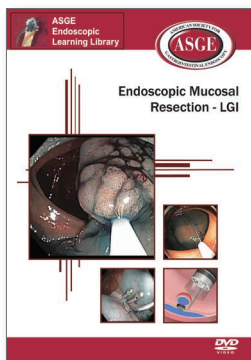
ASGE members save 28%

*Online Learning Center

BEST SELLER



*Online Learning Center – this item is also available for purchase and viewing through the ASGE Online Learning Center.



Endoscopic Mucosal Resection – LGI

Also available in Spanish.

Gottumukkala S. Raju, MD, FASGE, Tonya R. Kaltenbach, MD, MS, FASGE, and Roy M. Soetikno, MD, MS, FASGE

Different types of Endoscopic Mucosal Resections (EMR) are featured, such as lift and cut, suck and cut with a cap or using a band ligation. View actual video demonstrations of these techniques within the colon. A section on managing EMR complications related to bleeding, perforations and stricture and patient follow-up is also included.

[2012 – TRT 1:42:00] *2.00 CME Credits*

DV051 (DV051s – Spanish) **Member \$125**

DV051 (DV051s – Spanish) **Non-Member \$175**

ASGE members save 28%

*Online Learning Center



Diagnosis of Flat and Depressed Colorectal Neoplasms

Also available in Spanish.

Roy M. Soetikno, MD, MS, FASGE, Jennifer Barro, MD, Shai Friedland, MD, Suzanne Matsui, MD, Robert Rouse, MD, and Takahiro Fujii, MD

The endoscopic features, classification, detection, evaluation, and treatment of flat and depressed colorectal neoplasms are described and demonstrated.

[2004 – TRT 18:00]

DV016 (DV016s – Spanish) **Member \$55**

DV016 (DV016s – Spanish) **Non-Member \$95**

ASGE members save 42%

*Online Learning Center

Endoscopic Submucosal Dissection of Colon Lateral Spreading Tumor

(2012 Audiovisual Award Honorable Mention)

Won Young Cho, MD, Bong Min Ko, MD, Gene Hyun Bok, MD, PhD, Kwang Yeun Shim, MD, Hyun Gun Kim, MD, PhD, Tae Hee Lee, MD, Suck Ho Lee, MD, So Young Jin, MD, and Joo Young Cho, MD

Evidence-based comprehensive review of the indications, technical aspects and complications of performing endoscopic submucosal dissection of colonic lateral spreading tumors. Get details on the when, why, how and when not to perform this procedure with multiple outstanding video clips demonstrating the techniques and tools used to perform ESD in the colon.

[2012 – TRT 36:00] *0.75 CME Credit*

DV054 **Member \$75**

DV054 **Non-Member \$115**

ASGE members save 34%

*Online Learning Center

COLORECTAL

Office-Based, Non-Endoscopic Treatments for Hemorrhoids

Mitchel Guttenplan, MD, FACS and Robert A. Ganz, MD, FASGE

Content includes proper physical exam and endoscopic exam of anorectum, care of anal fissures, other spastic disorders and pelvic floor dysfunction, the need to address coexistent issues at the time of hemorrhoid care, and demonstration of in-office or ambulatory surgery centers (ASC) care of hemorrhoids.

[2013 – TRT 41:00] *0.75 CME Credit*

DV059 Member \$95

DV059 Non-Member \$135

ASGE members save 29%

*Online Learning Center

Endoscopic Approach to Hemorrhoids

Rome Jutabha, MD, Tonya R. Kaltenbach, MD, MS, FASGE, and Roy M. Soetikno, MD, MS, FASGE

Learn more about the safe, effective, and well tolerated endoscopic therapy of symptomatic hemorrhoids.

[2006 – TRT 28:02] *0.50 CME Credit*

DV027 Member \$55

DV027 Non-Member \$95

ASGE members save 42%

*Online Learning Center

Optical Diagnosis of Colorectal Polyps

Also available in Spanish.

This video is only available through the Online Learning Center.

(2013 Audiovisual Award Honorable Mention)

Tonya R. Kaltenbach, MD, MS, FASGE and Roy M. Soetikno, MD, MS, FASGE

The current pathologic diagnosis of colorectal polyps is at the tissue level. It is based on objective criteria, and is reproducible by various pathologists. This video highlights how the concept of optical diagnosis is based on these same principles.

[2013 – TRT 42:00] *0.75 CME Credit*

OLV004 (OLV004s – Spanish) Member \$35

OLV004 (OLV004s – Spanish) Non-Member \$50

ASGE members save 30%

ERCP

Endoscopic Retrograde Cholangiogram for Benign Biliary Diseases

Anthony Yuen Bun Teoh, MD, FRCS, Philip Wai Yan Chiu, MD, FRCS, FASGE, Charing Ching Ning Chong, FRCSEd, Joseph Jao Yiu Sung, MD, PhD, James Yun Wong Lau, FRCS, and Enders Kwok Wai Ng, MD, FRCS

A comprehensive presentation and demonstration of ERC in the treatment of benign hepato-biliary diseases, including management of common bile duct stones, surgical biliary complications, benign biliary strictures, primary sclerosing cholangitis, and sphincter of Oddi dysfunction.

[2010 – TRT 1:09:00]

DV044 Member \$95

DV044 Non-Member \$135

ASGE members save 29%

*Online Learning Center



Hemorrhoids Set

Save 10% by purchasing DV027 & DV059 as a bundled video set.

DV209 Member \$135

DV209 Non-Member \$210

ASGE members save 35%

Techniques of Endoscopic Therapy in Pancreatic Disorders

Kapil Gupta, MD, MPH, FASGE,
Timothy P. Kinney, MD, and
Martin L. Freeman, MD, FASGE

A detailed technical presentation of approaches to pancreatic therapy including ERCP, and adjunctive therapies such as EUS rendezvous, and extracorporeal shock wave lithotripsy are presented. Also addressed are the associated risks and complexities of these techniques and the supporting infrastructure and background required.

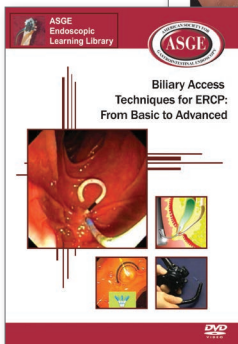
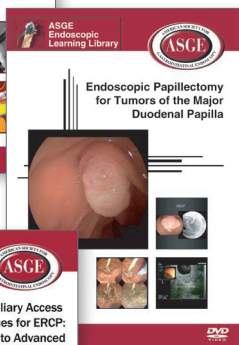
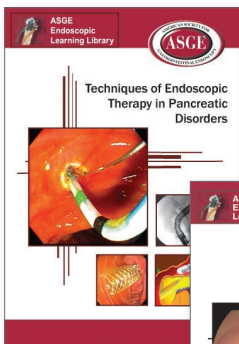
[2009 – TRT 1:22:00] **1.50 CME Credits**

DV043 Member \$75

DV043 Non-Member \$115

ASGE members save 34%

*Online Learning Center



Endoscopic Papillectomy for Tumors of the Major Duodenal Papilla

Tae Yoon Lee, MD, Myung-Hwan Kim, MD,
Sang Soo Lee, MD, Dong Wan Seo, MD, PhD,
and Sung Koo Lee, MD

Get a comprehensive spectrum of ampullary neoplasms of the papilla of Vater, with detailed video footage of endoscopic resection techniques.

[2008 – TRT 16:00] **0.25 CME Credit**

DV038 Member \$55

DV038 Non-Member \$95

ASGE members save 42%

*Online Learning Center

Biliary Access Techniques for ERCP: From Basic to Advanced

Martin L. Freeman, MD, FASGE, and
Kapil Gupta, MD, MPH, FASGE

A complete presentation of biliary cannulation and access techniques for ERCP ranging from basic to very advanced. All of the major techniques for biliary cannulation are presented in detail, including traditional methods, guidewire cannulation, and particular emphasis on various approaches including pancreatic guidewire and pancreatic stent-assisted techniques.

[2007 – TRT 1:03:21]

DV035 Member \$95

DV035 Non-Member \$135

ASGE members save 29%

*Online Learning Center

ERCP Set

Save 10% by purchasing DV035, DV038, DV043, & DV044 as a bundled video set.

DV206 Member \$285

DV206 Non-Member \$430

ASGE members save 33%

*Online Learning Center – this item is also available for purchase and viewing through the ASGE Online Learning Center.

EUS

Endoscopic Management of Necrotizing Pancreatitis and Pseudocysts

Martin L. Freeman, MD, FASGE, Stuart K. Amateau, MD, PhD, Mustafa A. Arain, MD, Rajeev Attam, MD, Gregory J. Beilman, MD, Guru Trikudanathan, MD, and J. Shawn Mallery, MD

Endoscopic interventions are rapidly evolving to be preferred treatment modalities for collections associated with necrotizing pancreatitis, as well as for pseudocysts. Application of these techniques requires not only highly advanced technical expertise, but in depth understanding of a complex multisystem disorder, and integration with other disciplines including interventional radiology, surgery, and critical care. With over 2 hours of content, divided into 12 chapters, this video explores the latest approach to these entities in great detail. Conveniently packaged on a Flash Drive.



[2017 – TRT 2:16:00] 2.25 CME Credits

DV077 Member \$125

DV077 Non-Member \$175

ASGE members save 28%

EUS-Guided Biliary Drainage: Current Techniques

(2015 Audiovisual Award Winner)

Vinay Dhir, MD, FASGE, Takao Itoi, MD, FASGE, and Amit Maydeo, MD, FASGE

EUS-guided biliary drainage (EUS-BD) has evolved as a viable technique for endoscopic biliary drainage. This video shows the current indications, techniques, and adverse events of EUS-BD. Technical details of the various EUS-BD procedures like rendezvous procedure, choledochoduodenostomy, hepatico-gastrostomy, and antegrade procedure are shown with multiple case scenarios. Possible adverse events and tips for their prevention are discussed.

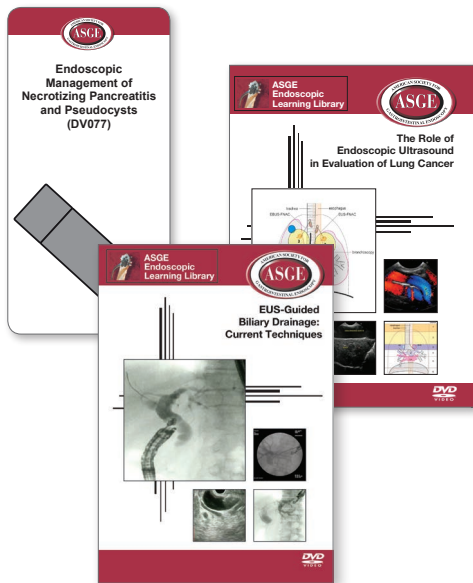
[2015 – TRT 30:00] 0.50 CME Credit

DV069 Member \$125

DV069 Non-Member \$175

ASGE members save 28%

*Online Learning Center



The Role of Endoscopic Ultrasound in Evaluation of Lung Cancer

(2017 Audiovisual Award Winner)

Malay Sharma, MD, DM, Piyush Somani, MD, DM, Rajendra Lingampalli, MD, DM, Saurabh Jindal, MD, DM, Raghav Bansal, MD, and Krishnaveni Janarthanan, MD, DM

Tissue diagnosis of lung cancer is obtained by thoracocentesis, bronchoscopy and CT guided biopsy. Endoscopic ultrasound (EUS) and endobronchial ultrasound (EBUS) are considered standard tests for evaluation of lung cancer. This video presents the techniques of EUS and EBUS along with applied anatomy of mediastinum. Topics covered: identification of International Association of Study of Lung Cancer (IASLC) borders, techniques of N staging as described by IASLC for 1 to 14 stations, T staging, including methods of assessment for local invasion, and M staging by screening of liver and left adrenal gland.

[2017 – TRT 30:00] 0.50 CME Credit

DV075 Member \$125

DV075 Non-Member \$175

ASGE members save 28%



ABCs of EUS: A Complete Roadmap

(2014 Audiovisual Award Winner)
 John Meenan, MD, PhD, FRCPI, FRCP,
 Charles Vu, MD, and Sabina DeMartino, MD

A "stations" approach to performing all the major areas of Linear and Radial EUS is covered. Benefit from 17 narrated video clips that include: EUS videos, literature discussions with slides of key points, diagrams and CT scans of regional anatomy, as well as animation to explain scope position and view orientation.



[2014 – TRT 4:00:00] *4.00 CME Credits*

DV064 Member \$125

DV064 Non-Member \$175

ASGE members save 28%

*Online Learning Center

Therapeutic EUS

Michael J. Levy, MD and
 Mark D. Topazian, MD, FASGE

The many aspects of therapeutic ultrasound are covered including celiac plexus interventions; drainage of pancreatic fluid collections; pancreaticobiliary access and drainage; and therapy of gastrointestinal bleeding.

[2009 – TRT 1:22:00] *1.50 CME Credits*

DV042 Member \$95

DV042 Non-Member \$135

ASGE members save 29%

*Online Learning Center

A Primer to Hepato-Pancreato-Biliary (HPB) EUS

(2011 Audiovisual Award Winner)

Jarrod Lee, MBBS, MRCP, Sharmila
 Sachithanandan, MD, Krishnan Raman, MD,
 Chan Yee Ming, MD, and Chin Khong Ling, MD

The basic principles and techniques of an EUS approach to common clinical presentations of HPB disorders are featured such as pancreatic masses, cystic lesions of the pancreas, pancreatitis, dilated biliary ducts and gallbladder disorders. This CD-ROM is not Mac compatible.

[2011 – TRT 1:15:00] *1.25 CME Credits*

DV048 Member \$95

DV048 Non-Member \$135

ASGE members save 29%

EUS Guided Tissue Sampling Techniques: Cytology & Biopsy

Henning Gerke, MD, Maged K. Rizk, MD,
 Kerry A. Proctor, MD, Gail C. Crowe, RN, BSN,
 CGRN, and Mary C. Bartley, RN

The use of endoscopic ultrasound to obtain fine needle aspiration samples for cytology and trucut biopsy for histology is discussed. Indications, contraindications and complications of each procedure are reviewed, plus the methods employed in handling each specimen type.

[2008 – TRT 35:52] *0.50 CME Credit*

DV040 Member \$75

DV040 Non-Member \$115

ASGE members save 34%

*Online Learning Center

Paradigm Shift in Endoscopic Management of Peri-pancreatic Fluid Collection

This video is only available through the Online Learning Center.

Anthony Yuen Bun Teoh, MD, FRCSEd (Gen),
 Charing Ching Ning Chong, FRCSEd (Gen),
 Lawrence Khek Yu Ho, MD, Vinay Kumar Dhir,
 MD, FASGE, Zhen Dong Jin, MD, Mitsuhiro
 Kida, MD, Jong Ho Moon, MD, PhD, Dong
 Wan Seo, MD, PhD, Ai Ming Yang, MD,
 Kenneth F. Binmoeller, MD, PhD, FASGE, Shyam
 Varadarajulu, MD, and the Asian EUS group

Highlights include the technical and technological evolution in endoscopic drainage of peri-pancreatic fluid collections (PFCs), the 2012 Revised Atlanta's criteria for defining PFCs, the optimal approach for draining pseudocysts, the role of endoscopic drainage in pancreatic necrosis, the technical considerations in endoscopic drainage, the specific stent systems for EUS-guided drainage, the adjunctive measures for successful endoscopic drainage, and more.

[2015 – TRT 35:00] *0.50 CME Credit*

OLV005 Member \$35

OLV005 Non-Member \$50

ASGE members save 30%

EUS Set

Save 10% by purchasing DV040, DV042, DV048, DV064, DV069, DV075, & DV077 as a bundled video set.

DV207 Member \$690

DV207 Non-Member \$980

ASGE members save 29%

GI BLEEDING

Endoscopic Gluing Technique Using the Cyanoacrylate Super Glue

(2013 Audiovisual Award Winner)

Roy M. Soetikno, MD, MS, FASGE and
Tonya R. Kaltenbach, MD, MS, FASGE

The authors describe and discuss the readily available cyanoacrylate, the details of the glue and endoscope preparation, the pearls of successful injection and the methods to avoid complications. The glue injection is shown primarily for treatment of bleeding gastric varices, and demonstrated in the setting of complex esophageal varices and fistulas.

[2013 – TRT 24:00] *0.50 CME Credit*

DV060 Member \$75

DV060 Non-Member \$115

ASGE members save 34%

*Online Learning Center

Anorectal Bleeding

(2013 Audiovisual Award Honorable Mention)

Shou-jiang Tang, MD, FASGE,
Sumanth R. Daram, MD, FACP,
Ruonan Wu, MSE, and Christopher Lahr, MD

Lower gastrointestinal (GI) bleeding is traditionally defined as bleeding originating from a lesion anatomically located distal to the ligament of Treitz. Clinically, it encompasses hematochezia from a small bowel or colon etiology, as well as anal “outlet” bleeding from an anorectal source. Content will focus on the etiology, evaluation and management of anorectal bleeding.

[2013 – TRT 1:12:00] *1.25 CME Credits*

DV058 Member \$95

DV058 Non-Member \$135

ASGE members save 29%

*Online Learning Center

Techniques of Hemostasis for Non-variceal Upper Gastrointestinal Bleeding

Louis M. Wong Kee Song, MD, FASGE
Elizabeth Rajan, MD, FASGE, and
Christopher J. Gostout, MD, FASGE

Currently available hemostatic devices and appropriate techniques for their utilization in the management of non-variceal UGI bleeding using various treatment paradigms are featured.

[2008 – TRT 36:00] *0.50 CME Credit*

DV036 Member \$75

DV036 Non-Member \$115

ASGE members save 34%

*Online Learning Center



Endoscopic Management of Variceal Hemorrhage in Cirrhosis

(2009 Audiovisual Award Winner)

Soung Won Jeong, MD, Joo Young Cho, MD, Jae Young Jang, MD, Won Young Cho, MD, Gene Hyun Bok, MD, PhD, Hong Su Kim, MD, Jin Oh Kim, MD, and Joon Seong Lee, MD

Gastroesophageal varices (GEV) are present in approximately 50% of patients with cirrhosis. GEV hemorrhage is the most common lethal complication of cirrhosis, occurring in ~20% if untreated. The DVD focuses on the endoscopic management of esophageal varices, and includes sections on endoscopic screening, prophylaxis and the acute management of patients with variceal hemorrhage.

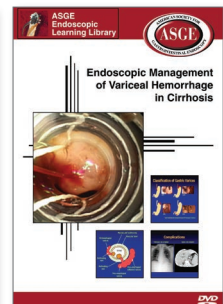
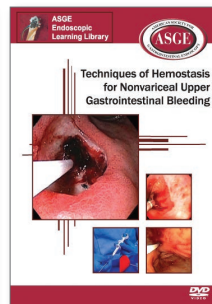
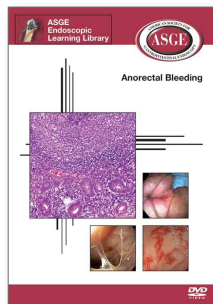
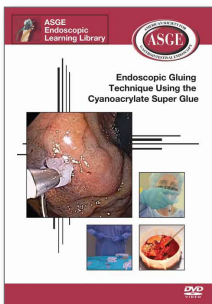
[2009 – TRT 26:00] *0.50 CME Credit*

DV041 Member \$95

DV041 Non-Member \$135

ASGE members save 29%

*Online Learning Center



UPPER GI

Endoscopic Interpretation and Therapy of Severe Lower GI Bleeding

Roy M. Soetikno, MD, MS, FASGE,
Tonya R. Kaltenbach, MD, MS, FASGE,
Peter B. Kelsey, MD, FASGE, and
Kenneth R. McQuaid MD, FASGE

Lower gastrointestinal bleeding is common, accounting for approximately 30% of all major GI bleeding. Studies have shown that urgent colonoscopy can be safe and therapeutic. The DVD sheds light on the art and science of the endoscopic management of patients with acute severe lower GI bleeding.

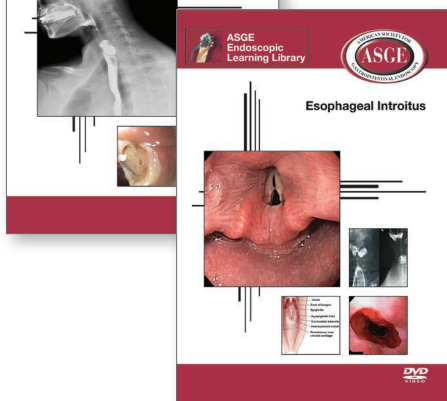
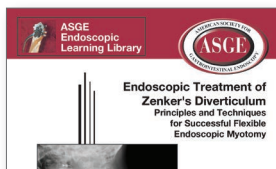
[2007 – TRT 33:13]

DV032 Member \$55

DV032 Non-Member \$95

ASGE members save 42%

*Online Learning Center



Endoscopic Treatment of Zenker's Diverticulum: Principles and Techniques for Successful Flexible Endoscopic Myotomy

(2015 Audiovisual Award Winner)

Wajeeh Salah, MD and
Todd H. Baron, MD, FASGE

Flexible endoscopic myotomy is a relatively new approach and is becoming increasingly practiced among other therapeutic endoscopic procedures. The ability to perform flexible endoscopic myotomy is an invaluable addition to the armamentarium of the practicing therapeutic gastroenterologist. The authors provide a foundation for understanding the pathophysiology, tools, treatment strategies and challenges in treating patients with Zenker's diverticulum.

[2015 – TRT 25:00] *0.50 CME Credit*

DV070 Member \$125

DV070 Non-Member \$175

ASGE members save 28%

*Online Learning Center

Esophageal Introitus

(2014 Audiovisual Award Winner)

Shou-jiang Tang, MD, FASGE and
Ruonan Wu, MSE

Benefit from valuable insight as the authors demonstrate EI anatomy, endoscopic findings and pathologies within EI and their management. Plus, learn to diagnose common endoscopic findings such as gastric mucosa heterotopia, web, radiation stricture, cricopharyngeal bar, mucositis, foreign body impaction, and more.

[2014 – TRT 1:02:00] *1.00 CME Credit*

DV061 Member \$125

DV061 Non-Member \$175

ASGE members save 28%

*Online Learning Center

Full Endoscopic Learning Library

Save 20% by purchasing DV011-DV077 as a bundled video set. You can purchase this set with those DVDs that are also available in Spanish.

DV200 (DV200s – Spanish) Member \$3,512

DV200 (DV200s – Spanish) Non-Member \$5,128

ASGE members save 31%

*Online Learning Center – this item is also available for purchase and viewing through the ASGE Online Learning Center.

UPPER GI

Per-Oral Endoscopic Myotomy (POEM) for Achalasia

(2014 Audiovisual Award Winner)

Jun-Hyung Cho, MD, Joo Young Cho, MD, Tae Hee Lee, MD, Su Jin Hong, MD and Won Kyung Cho, MD

Specific content covered includes examinations and preparation before POEM, procedural techniques, and post-procedure care. This DVD will help you learn more about how POEM procedure consists of five cardinal steps: creation of mucosal entry, creation of submucosal tunnel, identification of the esophagogastric junction, endoscopic myotomy and closure of mucosal entry.

[2014 – TRT 24:00] *0.50 CME Credit*

DV062 Member \$125

DV062 Non-Member \$175

ASGE members save 28%

*Online Learning Center

The Detection, Diagnosis and Treatment of Superficial Nonpolypoid Barrett's Neoplasia – A Potential New Approach

Roy M. Soetikno, MD, MS, FASGE, Tonya R. Kaltenbach, MD, MS, FASGE, Noriya Uedo, MD, and Takuji Gotoda MD, PhD, FASGE

Content covered includes detection of neoplasia using white light endoscopy and image enhanced endoscopy, and the diagnosis of superficial Barrett's neoplasia using the microvessels and surface findings. You will also learn the technique of using indigo carmine to help define the border of the neoplasia.

[2014 – TRT 25:00] *0.50 CME Credit*

DV063 Member \$95

DV063 Non-Member \$135

ASGE members save 29%

*Online Learning Center

Bariatrics Set

Save 10% by purchasing DV018 & DV050 as a bundled video set.

DV204 Member \$135

DV204 Non-Member \$210

ASGE members save 35%

*Online Learning Center – this item is also available for purchase and viewing through the ASGE Online Learning Center.

The Bariatric Patient: Endoscopic Diagnosis and Management

Sreenivasa S. Jonnalagadda, MD, FASGE, Steven A. Edmundowicz, MD, FASGE, and Sachin B. Wani, MD, FASGE

Benefit from a presentation of the role of endoscopy in the management of specific problems encountered in the post-bariatric patient. The clinical presentation, technical aspect of endoscopic interventions and expected outcomes will also be discussed.

[2012 – TRT 2:08:00] *2.50 CME Credits*

DV050 Member \$95

DV050 Non-Member \$135

ASGE members save 29%

*Online Learning Center

Bariatric Surgery – An Instructional Program for GI Endoscopists

Christopher Huang, MD, R. Armour Forse, MD, PhD, and Francis A. Farraye, MD, MSc, FASGE

Information on major bariatric operations along with video clips demonstrating normal anatomy and commonly encountered post-operative complications are provided.

[2004 – TRT 30:00] *0.50 CME Credit*

DV018 Member \$55

DV018 Non-Member \$95

ASGE members save 42%





Endoscopic Management of Early Stage Cancers of the Esophagus and Stomach

Gene Hyun Bok, MD, PhD, Joo Young Cho, MD, and So Young Jin, MD

Get an evidenced-based review of the current endoscopic techniques for endoscopic resection of malignant and premalignant lesions of the esophagus and stomach. This includes detailed demonstrations of EMR/ESD in the esophagus and stomach that are shown in HD, and categorized by specific location (cardia, body, antrum, prepyloric area).

[2013 – TRT 1:15:00] *1.25 CME Credits*

DV057 Member \$95

DV057 Non-Member \$135

ASGE members save 29%

*Online Learning Center

Endoscopic Techniques for Enteral Access in Nutritional Support

Stephen A. McClave, MD, FASGE and Mark H. DeLegge, MD, FASGE

Basic techniques of endoscopic enteral access device placement and modification of these techniques based on specific patient situations are presented.

[2001 – TRT 36:30]

DV022 Member \$55

DV022 Non-Member \$95

ASGE members save 42%

*Online Learning Center

Endoscopic Tissue Sampling of the Upper GI Tract: From Forceps to Optical

(2012 Audiovisual Award Winner)

Won Young Cho, MD, Gene Hyun Bok, MD, PhD, Wook Hyun Um, MD, Chnag Gyun Chun, MD, Hyun Gun Kim, MD, PhD, Tae Hee Lee, MD, Suck Ho Lee, MD, Su Jin Hong, MD, So Young Jin, MD, and Joo Young Cho, MD

Review the indications and basic techniques of conventional forceps biopsy by specific GI tract location and by disease such as Barrett's esophagus and benign/malignant gastric ulcers. Plus, learn about clinical situations where advanced tissue sampling techniques help with diagnosis including strip biopsy, endoscopic resection of mucosal and submucosal lesions and EUS guided needle biopsy.

[2012 – TRT 41:00] *0.75 CME Credit*

DV053 Member \$55

DV053 Non-Member \$95

ASGE members save 42%

*Online Learning Center

Endoscopic Treatment of Achalasia

This video is only available through the Online Learning Center.

Won Young Cho, MD, Jong Kee Park, MD, Su Jin Hong, MD, Gene Hyun Bok, MD, PhD, Tae Hee Lee, MD, Hyun Gun Kim, MD, PhD, Jin Oh Kim, MD, and Joon Seong Lee, MD

Get insight on treatments of achalasia, an esophageal smooth muscle motility disorder of unknown cause, characterized by aperistalsis of the esophageal body and impaired lower esophageal sphincter relaxation.

[2011 – TRT 36:00] *0.75 CME Credit*

OLV003 Member \$35

OLV003 Non-Member \$50

ASGE members save 30%

Upper GI Cancer Set

Save 10% by purchasing DV011, DV047 & DV057 as a bundled video set.

DV210 Member \$205

DV210 Non-Member \$310

ASGE members save 33%

UPPER GI

Endoscopic Management of Barrett's Esophagus

Deepak Agrawal, MD, MPH, MBA, Srikrishna Vemana, MD, and Amitabh Chak, MD, FASGE

A comprehensive presentation of the endoscopic diagnosis and treatment techniques for Barrett's esophagus, including endoscopic mucosal resection, multipolar electrocoagulation, argon plasma coagulation, photodynamic therapy, radiofrequency ablation and cryotherapy.

[2010 – TRT 1:40:00] **1.50 CME Credits**

DV047 Member \$75

DV047 Non-Member \$115

ASGE members save 34%

*Online Learning Center

Diagnosis and Treatment of Early Gastric Cancer

(2005 Audiovisual Award Winner)

Hisanao Hamanaka, MD, Takuji Gotoda, MD, PhD, FASGE, Ronald Yeh, MD, and Roy M. Soetikno, MD, MS, FASGE

The important features of early gastric cancer through the use of video tutorial and photo library are highlighted. In addition, endoscopic treatment options for early gastric cancer will be discussed.

[2005 – TRT 27:00] **0.50 CME Credit**

DV011 Member \$55

DV011 Non-Member \$95

ASGE members save 42%

*Online Learning Center

Endoscopic Removal of Foreign Bodies in Upper Gastrointestinal Tract

Chan Sup Shim, MD, FASGE, Sang Woo Cha, MD, PhD, Joo-Young Cho, MD, Joon Seong Lee, MD, and Moon-Sung Lee, MD

While 80 - 90% of foreign bodies pass spontaneously, 10 - 20% require nonoperative intervention. Learn the tricks of the trade through content that addresses indications, risks, tools, and techniques.

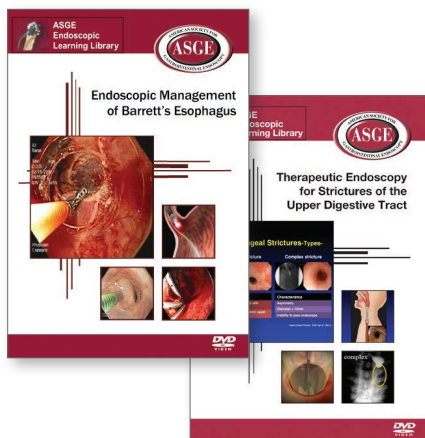
[2001 – TRT 18:50]

DV021 Member \$55

DV021 Non-Member \$95

ASGE members save 42%

*Online Learning Center



Therapeutic Endoscopy for Strictures of the Upper Digestive Tract

(2010 Audiovisual Award Winner)

Tae Hee Lee, MD, Joo Young Cho, MD, Gene Hyun Bok, MD, PhD, Il-Kwon Chung, MD, Tae Hoon Lee, MD, Youn Ho Jung, MD, Won Young Cho, MD, Hyun Gun Kim, MD, PhD, Jin Oh Kim, MD, and Joon Seong Lee, MD

Benefit from practical recommendations regarding indications and techniques for endoscopic treatment of upper digestive tract strictures focusing on dilation therapy, stent therapy and incisional therapy.

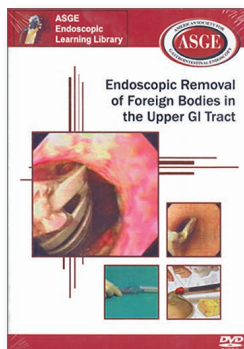
[2010 – TRT 1:13:00] **1.25 CME Credits**

DV046 Member \$95

DV046 Non-Member \$135

ASGE members save 29%

*Online Learning Center



SMALL BOWEL

Video Capsule Endoscopy: The Basics & Beyond

Christopher Marshall, MD,
Anupam Singh, MD, and
David Cave, MD, PhD

**BEST
SELLER**

Geared to both novice and more experienced users, this DVD takes viewers from the basics of equipment to normal findings and landmarks on capsule endoscopy. The authors review a number of conditions including bleeding, malabsorption, ulcerating diseases, and tumors and how they present on capsule endoscopy. Finally, a number of diagnostic dilemmas in capsule endoscopy are covered as well.

[2016 – TRT 1:05:00] *1.00 CME Credit*

DV072 Member \$125

DV072 Non-Member \$175

ASGE members save 28%

*Online Learning Center

Small Bowel Imaging

Klaus E. Monkemuller, MD, PhD, FASGE,
Marzena J. Zabielski, RN, BSN, Lucia C. Fry, MD,
FASGE, and Helmut Neumann, MD, PhD, FASGE

Understand the techniques, performance and limitations of current methods of small bowel imaging. Plus, master the spectrum of small bowel pathologies and the specific algorithmic approach to the various conditions, such as obscured GI bleeding, inflammatory small bowel diseases, malabsorption, small bowel tumors and polyps.

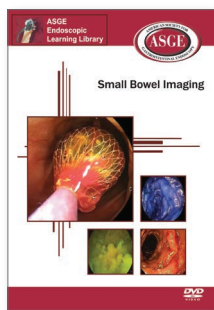
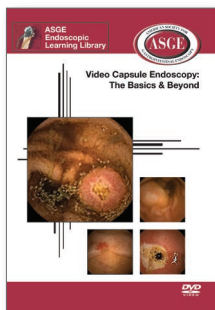
[2012 – TRT 40:00] *0.75 CME Credit*

DV052 Member \$75

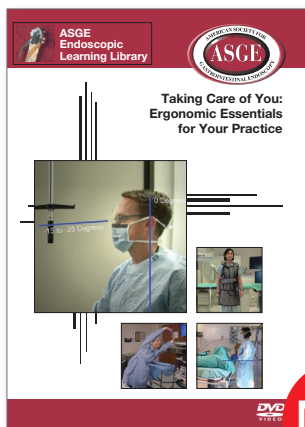
DV052 Non-Member \$115

ASGE members save 34%

*Online Learning Center



OTHER CLINICAL & NON-CLINICAL GI TOPICS



NEW

Taking Care of You: Ergonomic Essentials for Your Practice

Amandeep Shergill, MD,
Carisa Harris-Adamson, PhD, CPE, PT,
Gottumukkala S. Raju, MD, FASGE,
Nao Kusuzaki, Kenneth R. McQuaid, MD, FASGE,
George Russell, and Krystof Andres

Gastrointestinal endoscopy is associated with several risk factors for overuse injury: repetitive hand motion, high hand forces, and awkward wrist, shoulder, and neck postures. Studies to date have demonstrated that between 37% and 89% of endoscopists complain of musculoskeletal pain or injury potentially related to endoscopy. Ergonomics evaluates how a job can best be fit to an individual, instead of forcing an individual to fit into a job. This video gives viewers the basic tools they need to optimize their work environment and their interaction with the endoscope, helping them build a more sustainable endoscopic practice for years to come.

[2017 – TRT 40:00] *0.50 CME Credit*

DV074 Member \$125

DV074 Non-Member \$175

ASGE members save 28%

*Online Learning Center – this item is also available for purchase and viewing through the ASGE Online Learning Center.

OTHER CLINICAL & NON-CLINICAL GI TOPICS

Troubleshooting Commonly Encountered Problems with the Endoscope

(2016 Audiovisual Award Winner)

Michael A. Chang, MD, Wilson Kwong, MD, Thomas J. Savides, MD, FASGE, and Syed M. Abbas Fehmi, MD, MSc, FASGE

Becoming familiarized with the endoscope can be challenging. Individualized on the job teaching can be very effective, but is not standardized and can lead to ineffective transfer of knowledge. The authors present the basics of the endoscope functions, as well as advanced trouble shooting techniques when problems occur with the endoscope. Topics covered include Lighting Problems, Insufflation Problems, Suction Problems, Irrigation Problems, Monitor Problems, and Forceps Problems.

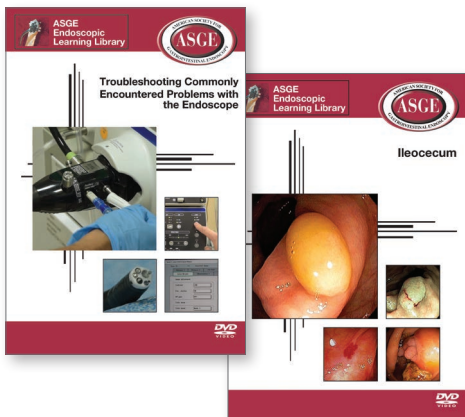
[2016 – TRT 23:00] **0.50 CME Credit**

DV076 Member \$125

DV076 Non-Member \$175

ASGE members save 28%

**BEST
SELLER**



Endoscopic Features of Lymphoproliferative Diseases

This video is only available through the Online Learning Center.

Georgios Mavrogenis, MD, Alessandra Camboni, MD, Marie Armelle Denis, MD, Walter Margos, MD, Astrid Marot, MD, Olivier Dewit, MD, PhD, Hubert Piessevaux, MD, PhD, Anne Jouret-Mourin, MD, PhD, Eric Van Den Neste, MD, PhD, and Pierre H. Deprez, MD, PhD

The authors present in vivid detail the endoscopic, histologic, and radiologic findings along with the clinical background and management of several distinct endoscopic presentations of gastric mucosa-associated lymphoid tissue (MALT) lymphoma, duodenal follicular lymphoma, posttransplantation lymphoproliferative disorder (PTLD) of the duodenum, colonic MALT lymphoma, solitary rectal plasmacytoma, and high-grade diffuse large B cell colorectal lymphoma.

[2015 – TRT 13:00] **0.25 CME Credit**

OLV006 Member \$35

OLV006 Non-Member \$50

ASGE members save 30%

*Online Learning Center – this item is also available for purchase and viewing through the ASGE Online Learning Center.

Image Enhanced Endoscopy

Also available in Spanish.

(2008 Audiovisual Award Winner)

Roy M. Soetikno, MD, MS, FASGE, and Tonya R. Kaltenbach, MD, MS, FASGE

Topics covered in this high-definition video include high-resolution versus high-definition imaging, sprayed dye-based image enhancement versus electronically-enhanced imaging, identification of mucosal patterns and mucosal vascular details highlighted by IEE, and the use of spray catheters and caps in IEE.

[2008 – TRT 36:00] **0.50 CME Credit**

DV037 (DV037s – Spanish) Member \$75

DV037 (DV037s – Spanish) Non-Member \$115

ASGE members save 34%

*Online Learning Center

Ileocecum

(2015 Audiovisual Award Winner)

Shou-jiang Tang, MD, FASGE and Ruonan Wu, MSE

The authors demonstrate ileocecum anatomy, endoscopic findings, and pathologies. Topics covered include recognizing normal endoscopic landmarks and findings within the ileocecum; diagnosing common endoscopic findings such as ischemia, drug induced injury, portal colopathy and varices, hemorrhage, inflammatory bowel disease; as well as recognizing and managing uncommon pathologies such as various types of inflammation and infection, mucocele, and neoplasms.

[2015 – TRT 1:05:00] **1.00 CME Credit**

DV066 Member \$125

DV066 Non-Member \$175

ASGE members save 28%

*Online Learning Center

ASGE ORDER FORM

Product Code	Description	Quantity	Unit Price	Total

Note: Prices are subject to change. Some quantities are limited.

Subtotal

All orders are sent UPS ground (please allow 2-3 weeks for delivery). Shipping & handling to Alaska, Hawaii, Canada, and all international locations is available for \$5.00 plus standard UPS charges. Contact ASGE for this cost. Optional Next Day or Second Day Air is available to all U.S. destinations for \$5.00 plus standard UPS charges. Contact ASGE for this cost. UPS delivery restrictions apply to certain destinations. Please allow one business day for processing all overnight and 2-day orders. Indicate Delivery:
 Std.US Int'l.
 Overnight 2-day

Sales Tax (IL residents only): add 8%

Shipping/Handling (Use chart below)

Shipping & Handling to US destinations:	
<u>Merchandise Total</u>	<u>Shipping & Handling</u>
Under \$50	\$10.00
\$50.01 to \$100	\$15.00
\$100.01 to \$200	\$25.00
\$200.01 to \$300	\$30.00
\$300.01 to \$400	\$36.00
\$400.01 to \$500	\$40.00
Over \$500.00	7% of order

Total

**Please print legibly. Membership is required in order to receive member pricing.
 To become an ASGE member, visit www.asge.org and click "Join ASGE".**

Member Number (if available) _____

Name of ASGE Member _____

Payment Information

____ Payment enclosed.
 Please make your check or money order payable to ASGE in US dollars. Checks must be drawn from US bank. Do not send cash.
 ____ Charge my: Visa MasterCard Discover
 American Express

Shipping Information

Please provide complete shipping, contact and payment information below. Payment must accompany order.

 Credit card number

 Expiration date (MM/YR)

 Name as it appears on credit card

 Billing address if different from right

 Signature

 Name

 Title

 Company Name

 Mailing Address (No PO Box)

 City

 State

 Country

 Postal Code

 Phone

 Fax

 E-mail

Mail or fax a copy of this completed form with payment to:

ASGE, P.O. Box 809055, Chicago, IL 60680-9055 • Phone: 630-573-0600 • Fax: 630-963-8332 • E-mail: info@asge.org

Add These New Videos to Your Collection!

The Endoscopic Learning Library is the field's most comprehensive collection of high-quality procedure videos on endoscopy. Benefit from full-color, live-action educational content on the most current topics available. Many titles also offer the ability to earn CME credits. The library features these newest releases.

Evaluation of the Anorectum: Physical and Endoscopic Examinations (DV073) Page 4

Taking Care of You: Ergonomic Essentials for Your Practice (DV074)

Page 15

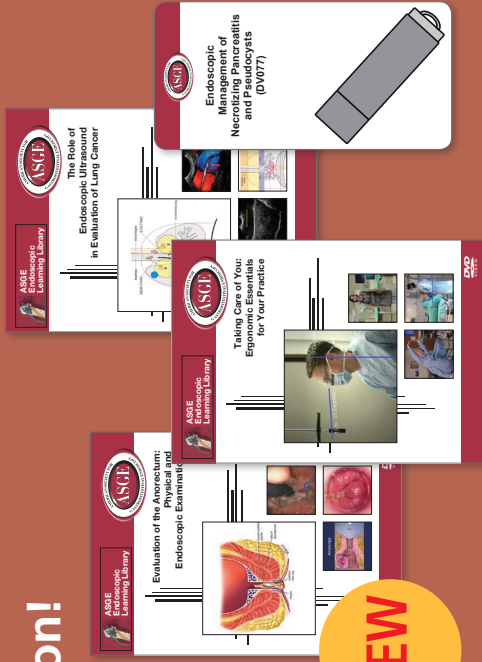
The Role of Endoscopic Ultrasound in Evaluation of Lung Cancer (DV075)

Page 8

Endoscopic Management of Necrotizing Pancreatitis and Pseudocysts (DV077)

Page 8

NEW



American Society for Gastrointestinal Endoscopy

3300 Woodcreek Drive
Downers Grove, IL 60515



ENDOSCOPIC LEARNING LIBRARY

Tel: 630.573.0600

Fax: 630-963-8332

www.asge.org

NON-PROFIT ORG.
U.S. POSTAGE
PAID
PERMIT 384
OAK BROOK, IL